

Mouse TNF- α (Tumor Necrosis Factor Alpha) ELISA Kit

Catalog #:KE1419

**Detection and Quantification of Mouse
TNF- α (Tumor Necrosis Factor Alpha) in
Serum, Plasma, Biological Fluids.**

**Please read the provided manual as
suggested experimental protocols may
have changed.**

**Research Purposes Only. Not Intended for
Diagnostic or Clinical Procedures.**

CONTENTS

PAGE

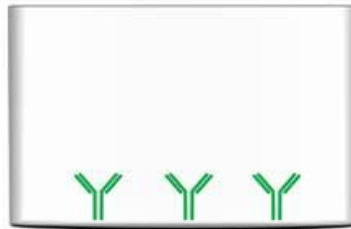
Assay Principles.....	3
Assay Format.....	4
Assay Restrictions.....	5
Materials Included.....	5
Additional Materials Required.....	6
Health and Safety Precautions.....	6
Storage Information.....	7
Sample Preparation and Storage.....	8
Sample Experiment Layout.....	9
Immunoassay Protocol.....	10
Summarized Protocol.....	11
Sensitivity.....	15
Support.....	15
Notes.....	16

ASSAY PRINCIPLES

The Mouse TNF- α (Tumor Necrosis Factor Alpha) ELISA Kit contains the components necessary for quantitative determination of natural or recombinant Mouse TNF- α (Tumor Necrosis Factor Alpha) concentrations within any experimental sample including cell lysates, serum and plasma. This particular immunoassay utilizes the quantitative technique of a “Sandwich” Enzyme-Linked Immunosorbent Assay (ELISA) where the target protein (antigen) is bound in a “sandwich” format by the primary capture antibodies coated to each well-bottom and the secondary detection antibodies added subsequently by the investigator. The capture antibodies coated to the bottom of each well are specific for a particular epitope on TNF- α (Tumor Necrosis Factor Alpha) while the user-added detection antibodies bind to epitopes on the captured target protein. Amid each step of the procedure, a series of wash steps must be performed to ensure the elimination of non-specific binding between proteins to other proteins or to the solid phase. After incubation and “sandwiching” of the target antigen, a peroxidase enzyme is conjugated to the constant heavy chain of the secondary antibody (either covalently or via Avidin/Streptavidin-Biotin interactions), allowing for a colorimetric reaction to ensue upon substrate addition. When the substrate TMB (3, 3', 5, 5'-Tetramethylbenzidine) is added, the reaction catalyzed by peroxidase yields a blue color that is representative of the antigen concentration. Upon sufficient color development, the reaction can be terminated through addition of Stop Solution (2 N Sulfuric Acid) where the color of the solution will turn yellow. The absorbance of each well can then be read by a spectrophotometer, allowing for generation of a standard curve and subsequent determination of protein concentration.

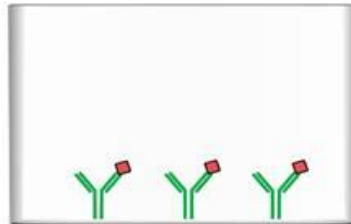
ASSAY FORMAT


Capture Antibody



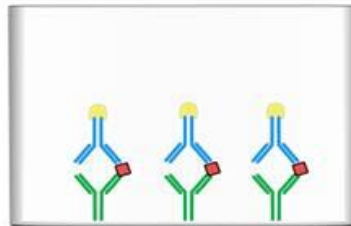
Capture antibodies specific for the target are coated to the plate. Additional binding sites on the plate are blocked.


Target Antigen



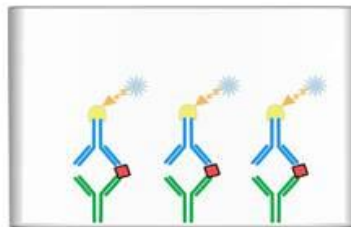
Target antigen present in standard or sample is bound by capture antibodies on the solid-phase.


Biotinylated Detection Antibody



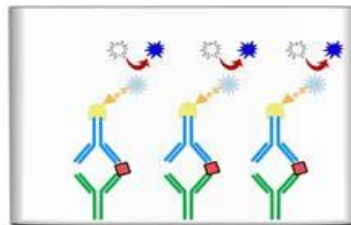
Biotinylated detection antibodies specific for the target are added to bind another epitope on the target antigen.


Streptavidin-HRP



Streptavidin-HRP attaches to detection antibody via high affinity streptavidin-biotin interaction.


Unreacted TMB



TMB substrate is converted to the blue TMB diimine via the HRP enzyme. Upon addition of acid, the reaction terminates and the wells can be read at 450 nm.


Blue TMB Diimine Product

ASSAY RESTRICTIONS

- This ELISA kit is intended for research purposes only, NOT diagnostic or clinical procedures of any kind.
- Materials included in this kit should NOT be used past the expiration date on the kit label.
- Reagents or substrates included in this kit should NOT be mixed or substituted with reagents or substrates from any other kits.
- Variations in pipetting technique, washing technique, operator laboratory technique, kit age, incubation time or temperature may cause differences in binding affinity of the materials provided.
- The assay is designed to eliminate interference and background by other cellular macromolecules or factors present within any biological samples. However, the possibility of background noise cannot be fully excluded until all factors have been tested using the assay kit.

MATERIALS INCLUDED

Component	Quantity Per Plate
Microstrips Coated w/ Capture Antibody	12 x 8-Well Microstrips
Protein Standard	Lyophilized
Biotinylated Detection Antibody	120 μ L
100x Streptavidin-HRP	120 μ L
Sample Diluent A (50x)	250ul
Sample Diluent B	60ml
Ready-to-Use Substrate	10 ml
Wash Buffer (10x)	60 ml
Stop Solution	6 ml
Adhesive Plate Sealers	3 Sheets
Technical Manual	1 Manual

ADDITIONAL MATERIALS REQUIRED

The following materials and/or equipment are NOT provided in this kit but are necessary to successfully conduct the experiment:

- Microplate reader able to measure absorbance at 450 nm (with correction wavelength set to 540 nm or 570 nm)
- Micropipettes with capability of measuring volumes ranging from 1 μ l to 1 ml
- Deionized or sterile water
- Squirt bottle, manifold dispenser, multichannel pipette reservoir or automated microplate washer
- Graph paper or computer software capable of generating or displaying logarithmic functions
- Absorbent paper or vacuum aspirator
- Test tubes or microfuge tubes capable of storing ≥ 1 ml
- Bench-top centrifuge (optional)
- Bench-top vortex (optional)
- Orbital shaker (optional)

HEALTH AND SAFETY PRECAUTIONS

- Reagents provided in this kit may be harmful if ingested, inhaled or absorbed through the skin. Please carefully review the MSDS for each reagent before conducting the experiment.
- Stop Solution contains 2 N Sulfuric Acid (H_2SO_4) and is an extremely corrosive agent. Please wear proper eye, hand and face protection when handling this material. When the experiment is finished, be sure to rinse the plate with copious amounts of running water to dilute the Stop Solution prior to disposing the plate.

STORAGE INFORMATION

Note: If used frequently, reagents may be stored at 4°C.

Unopened Kits: Store at 4°C for 6 months.

Component	Storage Time	Storage Information
Microstrips Coated w/ Capture Antibody	6 Months	4°C
100x Streptavidin-HRP		
Wash Buffer (10x)		
Assay Diluent		
Ready-to-Use Substrate		
Stop Solution		
Biotinylated Detection Antibody		
Protein Standard	Lyophilized: 6 Months Reconstituted: 1 Month	
Adhesive Plate Sealers	-	-
Technical Manual	-	-

SAMPLE PREPARATION AND STORAGE

If samples are to be used within 24 hours, aliquot and store at 4°C. If samples are to be used over a long period of time, aliquot and store between -20°C and -80°C, depending on the duration of storage.

Note: Samples containing a visible precipitate or pellet must be clarified prior to use in the assay.

Samples May require an dilution using Assay Diluent

Caution: Avoid repeated freeze/thaw cycles to prevent loss of biological activity of proteins in experimental samples.

Cell Lysate and Supernatants

Remove large cell components via centrifugation and perform the assay. Cell lysates and supernatants require a dilution using Assay Diluent. A serial dilution may be performed to determine a suitable dilution factor for the sample. For future use of the sample, follow the sample storage guidelines stated above. Cell culture supernatant samples suggest to be diluted 4 times due to matrix effect. It is suggested that the four-fold dilution should be 50ul sample +150ul Sample Diluent B.

Serum

Allow samples to clot in a serum separator tube (SST) for 30 minutes. After sufficient clotting, centrifuge at 1000 x g for 15 minutes and remove serum from SST in preparation for the assay. For future use of the sample, follow the storage guidelines above.

Plasma

Use heparin, citrate or EDTA as an anticoagulant to gather plasma from original biological sample. After collection of the plasma, centrifuge for 15 minutes at 1000 x g. This step must be performed within 30 minutes of plasma collection. Afterwards, perform the assay or for future use of the sample, follow the storage guidelines stated above.

SAMPLE EXPERIMENT LAYOUT

	1	2	3	4	5	6
A	Standard (High Point)	Standard (High Point)	Standard (High Point)	Sample	Sample	Sample
B	Standard (1:2)	Standard (1:2)	Standard (1:2)	Sample	Sample	Sample
C	Standard (1:4)	Standard (1:4)	Standard (1:4)	Sample	Sample	Sample
D	Standard (1:8)	Standard (1:8)	Standard (1:8)	Sample	Sample	Sample
E	Standard (1:16)	Standard (1:16)	Standard (1:16)	Sample	Sample	Sample
F	Standard (1:32)	Standard (1:32)	Standard (1:32)	Sample	Sample	Sample
G	Standard (1:64)	Standard (1:64)	Standard (1:64)	Sample	Sample	Sample
H	Negative Control	Negative Control	Negative Control	Sample	Sample	Sample

IMMUNOASSAY PROTOCOL

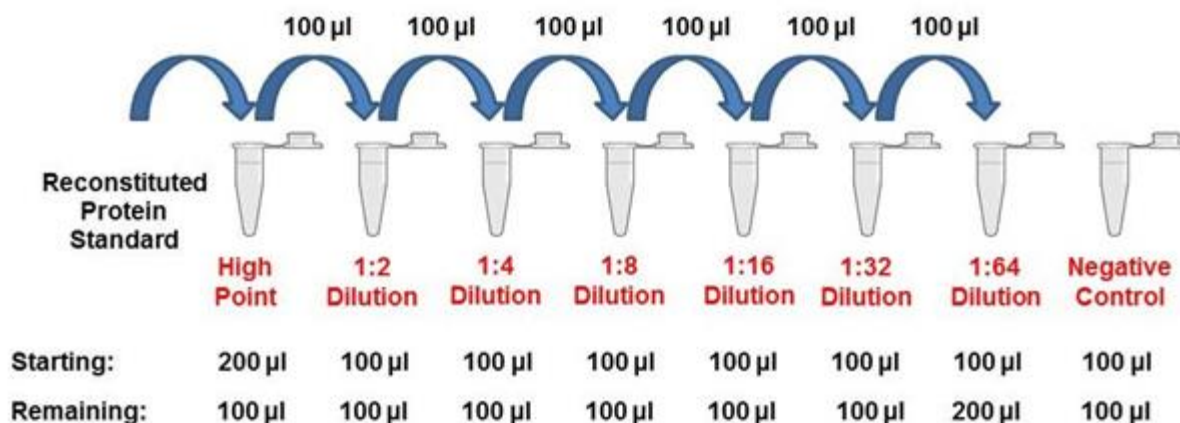
Note: If possible, all incubation steps should be performed on an orbital shaker to equilibrate solutions when added to the microplate wells. Also, all provided solutions should be at ambient temperature prior to use.

Note: Avoid adding solutions into wells at an angle, always keep pipette tip perpendicular to plate bottom.

Reconstitution of Provided Materials

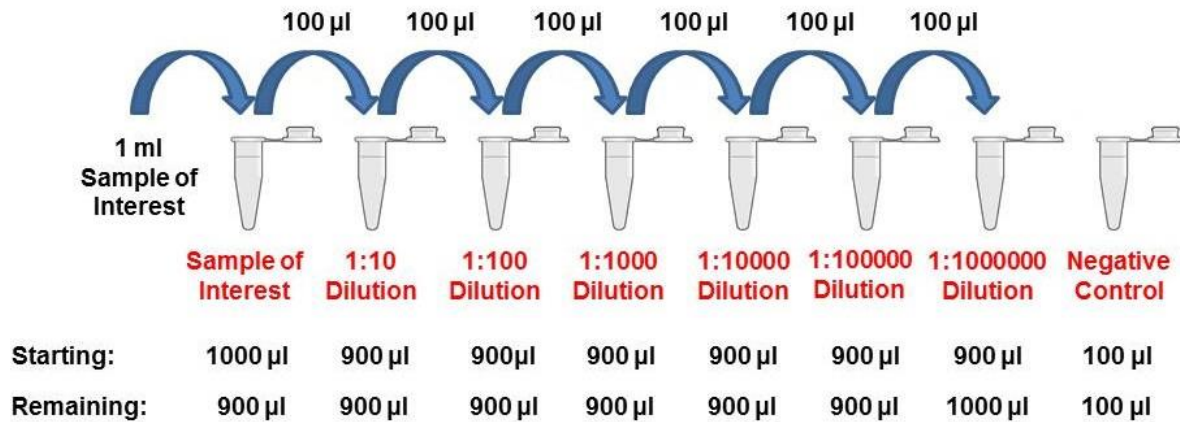
1. Dilute the 10x Wash Buffer in ddH₂O for 1x Wash Buffer.
2. Dilute the 100x Streptavidin-HRP by Sample Diluent B Diluent(1:100)
3. Dilute the 100x Biotinylated Detection Antibody by Sample Diluent B Diluent(1:100)
4. Dilute the 50x Sample Diluent A by Sample Diluent B Diluent(1:50)
5. Reconstitute the Protein Standard in 1mL Sample Diluent B for 1000pg/mL.

To obtain serial dilution high point, dilute reconstituted Protein Standard to the maximum concentration for serial dilution by adding 1000µl reconstituted Protein Standard to serial dilution high point tube and then raising the volume to 200 µl. Shown below is a diagram illustrating a hypothetical 2-fold serial dilution on a given reconstituted Protein Standard.



6. For samples of unknown protein concentrations, serial dilute the experimental sample using Sample Diluent B to determine range of

detection and acceptable dilutions. Shown below is a diagram illustrating a 10-fold serial dilution on a given Sample of Interest.



Addition of Known Standard and Unknown Sample to Immunoassay

The Mouse TNF- α (Tumor Necrosis Factor Alpha) ELISA Kit allows for the detection and quantification of endogenous levels of natural and/or recombinant TNF- α (Tumor Necrosis Factor Alpha) within the range of 15.6-1000pg/mL

1. Add Sample Diluent A 100ul to each well
2. Add **Standard / Sample /Blank** 40 µl to each well in duplicate or triplicate.
3. Seal the microplate air-tight using one of the microplate adhesive seals provided in this kit or Parafilm if readily available.
4. Incubate at room temperature for 1.5 hours.

Addition of Detection Antibody to Capture Antibody-Bound Samples

1. Aspirate the solution out of the microplate wells.
2. **Do not** wash, Add 100ul Biotinylated Detection Antibody to each well, seal the plate and incubate at room temperature for 1 hours.

Conjugation of Streptavidin-HRP to Biotinylated Detection Antibody

1. Remove the detection antibody solution out of the microplate wells by either vacuum-based aspirator or paper towel blotting.
2. After the 4th wash step, add 100 µl of 1xStreptavidin-HRP solution into each well and incubate at room temperature for 30 minutes.

Application of Liquid Substrate for Colorimetric Reaction

1. Remove the 1xStreptavidin-HRP solution out of the microplate wells by either vacuum-based aspirator or paper towel blotting. Prepare the Ready-to-Use Substrate by bringing it to room temperature without exposure to fluorescent or UV light as these may degrade the substrate. Perform 4 consecutive wash steps with gentle shaking between each wash.
2. After the 4th wash step, add 90 µl of Ready-to-Use Substrate solution into each well and incubate at room temperature for color development. The microplate should be kept out of direct light by either covering with an opaque object or putting it into a dark room. Closely monitor the color development as some wells may turn blue very quickly depending on analyte and/or detection antibody-HRP concentrations. Once the blue color has ceased to develop further, immediately add 50 µl of Stop Solution to each well being used. The color in the wells should immediately change from blue to yellow.
3. The microplate is now ready to be read by a microplate reader. Within 30 minutes of adding the Stop Solution, determine the optical density (absorbance) of each well by reading the plate with the microplate reader set to 450 nm. If wavelength correction is available, set to 540 nm or 570 nm. If wavelength correction is not available, subtract readings at 540 nm or 570 nm from the readings at 450 nm. **Caution:**

Readings made directly at 450 nm without correction may be higher and less accurate.

Generation of Standard Curve and Interpretation of Data

1. Average the duplicate or triplicate readings for each standard, control and sample and subtract the average zero standard optical density.
2. Generate a standard curve by using Microsoft Excel or other computer software capable of establishing a 4-Parameter Logistic (4-PL) curve fit. If using Excel or an alternative graphing tool, plot the average optical density values in absorbance units (y-axis) against the known standard concentrations in pg/ml (x-axis). **Note:** Only use the values in which a noticeable gradient can be established. Afterwards, generate a best fit curve or “trend-line” through the plotted points via regression analysis. **Note:** Shown on the next page is an example of typical data produced by analysis of the standard sample.

SENSITIVITY

The Mouse TNF- α (Tumor Necrosis Factor Alpha) ELISA Kit allows for the detection and quantification of endogenous levels of natural and/or recombinant Mouse TNF- α (Tumor Necrosis Factor Alpha) within the range of 15.6-1000pg/mL.

TECHNICAL SUPPORT

For troubleshooting, information or assistance, please go online to www.immunoway.com.

ImmunoWay Biotechnology Company

Add: 2200 Ringwood Ave, San Jose, CA, 95131

Technical Support: tech@immunoway.com

Ordering: order@immunoway.com

NOTES



**Over 3,000 Assay Kits including Sandwich, Cell-Based and
Transcription Factor ELISA Kits**

Visit us at www.immunoway.com