

Wnt3a Rabbit pAb

CatalogNo: YT8153

Key Features

Host Species

- Rabbit

Reactivity

- Human, Mouse, Rat

Applications

- WB

MW

- 39kD (Calculated)
- 39kD (Observed)

Isotype

- IgG

Recommended Dilution Ratios

WB 1:5000-1:20000

Storage

Storage* -15°C to -25°C/1 year (Do not lower than -25°C)

Formulation PBS, 50% glycerol, 0.05% Proclin 300, 0.05% BSA

Basic Information

Clonality Polyclonal

Immunogen Information

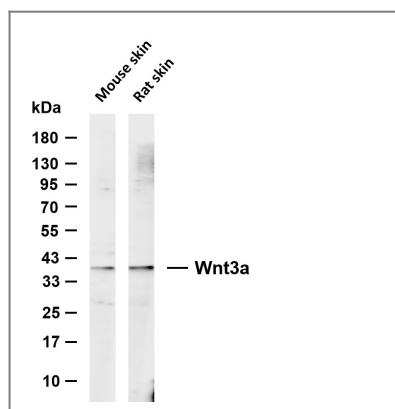
Specificity This antibody detects endogenous levels of Wnt3a and Wnt3.

Target Information

Gene name wnt3a

Protein Name	Organism	Gene ID	UniProt ID
	Human	89780;	P56704;
	Mouse		P27467;
Cellular Localization	Secreted, extracellular space, extracellular matrix . Secreted .		
Tissue specificity	Moderately expressed in placenta and at low levels in adult lung, spleen, and prostate.		
Function	Function:Ligand for members of the frizzled family of seven transmembrane receptors.,Function:Ligand for members of the frizzled family of seven transmembrane receptors. Wnt-3 and Wnt-3a play distinct roles in cell-cell signaling during morphogenesis of the developing neural tube.,similarity:Belongs to the Wnt family.,subunit:Interacts with PORCN.,tissue specificity:Moderately expressed in placenta and at low levels in adult lung, spleen, and prostate.,		

Validation Data



Various whole cell lysates were separated by 4-20% SDS-PAGE, and the membrane was blotted with anti-Wnt3a antibody. The HRP-conjugated Goat anti-Rabbit IgG (H + L) antibody was used to detect the antibody. Lane 1: Mouse skin Lane 2: Rat skin Predicted band size: 39kDa Observed band size: 39kDa

Contact information

Orders: order@immunoway.com
 Support: tech@immunoway.com
 Telephone: 877-594-3616 (Toll Free), 408-747-0185
 Website: <http://www.immunoway.com>
 Address: 2200 Ringwood Ave San Jose, CA 95131 USA



Please scan the QR code to access additional product information:
Wnt3a Rabbit pAb