

GSDME C-terminal Rabbit pAb

CatalogNo: YT7989

Orthogonal Validated 

Key Features

Host Species

- Rabbit

Reactivity

- Human, Mouse, Rat

Applications

- WB

MW

- 55kD, 25kD (Observed)

Isotype

- IgG

Recommended Dilution Ratios

WB 1:5000-20000

Storage

Storage*

-15°C to -25°C/1 year (Do not lower than -25°C)

Formulation

Liquid in PBS containing 50% glycerol, 0.5% BSA and 0.02% sodium azide.

Basic Information

Clonality

Polyclonal

Immunogen Information

Immunogen

Synthesized peptide derived from human GSDME. AA range: 400-496

Specificity

The antibody detects endogenous full length and c-terminal fragment of gsdme protein,

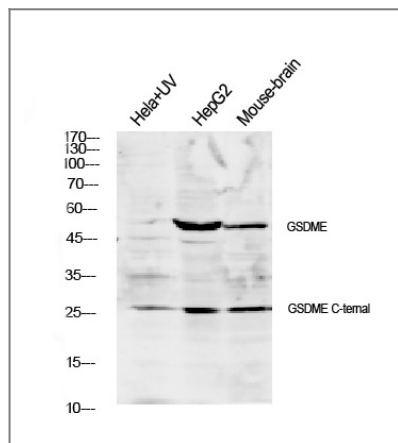
Target Information

Gene name

DFNA5 GSDME

Protein Name	Gasdermin-E,DFNA5,Dfna5h,EG14210,2310037D07Rik .4932441K13Rik ,ICERE 1,ICERE-1,Deafness, autosomal dominant 5,Non-syndromic hearing impairment protein 5,GSDME-CT		
	Organism	Gene ID	UniProt ID
	Human	1687;	O60443;
	Mouse		Q9Z2D3;
Cellular Localization	[Gasdermin-E, N-terminal]: Cell membrane ; Multi-pass membrane protein .; [Gasdermin-E]: Cytoplasm, cytosol .		
Tissue specificity	Expressed in cochlea (PubMed:9771715). Low level of expression in heart, brain, placenta, lung, liver, skeletal muscle, kidney and pancreas, with highest expression in placenta (PubMed:9771715).		
Function	Cleavage at Asp-270 by CASP3 (mature and uncleaved precursor forms) or granzyme B (GZMB) relieves autoinhibition and is sufficient to initiate pyroptosis.		

Validation Data



Western blot analysis of lysates from 1)mouse-brain, 2)Hela cells treated by UV 15min,3) HepG2 cells, primary antibody was diluted at 1:1000, 4°over night, secondary antibody HRP goat anti rabbit (Immunoway:RS0002) was diluted at 1:10000

Contact information

Orders: order@immunoway.com
 Support: tech@immunoway.com
 Telephone: 877-594-3616 (Toll Free), 408-747-0185
 Website: <http://www.immunoway.com>
 Address: 2200 Ringwood Ave San Jose, CA 95131 USA



Please scan the QR code to access additional product information:
GSDME C-terminal
Rabbit pAb