

SIAT6 Rabbit pAb

CatalogNo: YT7986

Key Features

Host Species

- Rabbit

Reactivity

- Human, Mouse, Rat

Applications

- WB, ELISA, IHC

MW

- 41kD (Calculated)

Isotype

- IgG

Recommended Dilution Ratios

WB 1:500-2000

IHC 1:50-300

ELISA 1:2000-20000

Storage

Storage*

-15°C to -25°C/1 year (Do not lower than -25°C)

Formulation

Liquid in PBS containing 50% glycerol, 0.5% BSA and 0.02% sodium azide.

Basic Information

Clonality

Polyclonal

Immunogen Information

Immunogen

Synthesized peptide derived from human SIAT6

Specificity

This antibody detects endogenous levels of Human, Mouse, Rat SIAT6

Target Information

Gene name

ST3GAL3 SIAT6

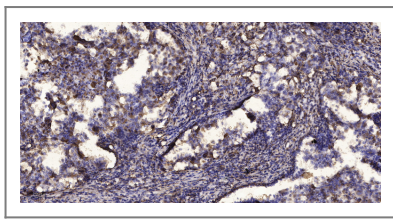
Protein Name SIAT6

Organism	Gene ID	UniProt ID
Human	6487;	Q11203;
Mouse	20441;	P97325;
Rat	64445;	Q02734;

Cellular Localization Golgi apparatus, Golgi stack membrane; Single-pass type II membrane protein. Secreted. Membrane-bound form in trans cisternae of Golgi. Secreted into the body fluid.

Tissue specificity Highly expressed in adult skeletal muscle and in all fetal tissues examined and to a much lesser extent in placenta, lung and liver.

Validation Data



Immunohistochemical analysis of paraffin-embedded human Squamous cell carcinoma of lung. 1, Antibody was diluted at 1:200(4° overnight). 2, Tris-EDTA,pH9.0 was used for antigen retrieval. 3,Secondary antibody was diluted at 1:200(room temperature, 45min).

Contact information

Orders: order@immunoway.com
Support: tech@immunoway.com
Telephone: 877-594-3616 (Toll Free), 408-747-0185
Website: <http://www.immunoway.com>
Address: 2200 Ringwood Ave San Jose, CA 95131 USA



Please scan the QR code to access additional product information:
SIAT6 Rabbit pAb

For Research Use Only. Not for Use in Diagnostic Procedures.

[Antibody](#) | [ELISA Kits](#) | [Protein](#) | [Reagents](#)