

LC3 A/B Rabbit pAb

CatalogNo: YT7936 Orthogonal Validated 

Key Features

Host Species

- Rabbit

Reactivity

- Human, Mouse, Rat

Applications

- WB, ELISA, IHC

MW

- 14,16kD (Observed)

Isotype

- IgG

Storage

Storage* -15°C to -25°C/1 year (Do not lower than -25°C)

Formulation Liquid in PBS containing 50% glycerol, 0.5% BSA and 0.02% sodium azide.

Recommended Dilution Ratios

WB 1:500-2000

IHC 1:50-300

ELISA 1:2000-20000

Basic Information

Clonality Polyclonal

Immunogen Information

Immunogen Synthesized peptide derived from human LC3 A/B

Specificity This antibody detects endogenous levels of Human, Mouse, Rat LC3 A/B

Target Information

Gene name LC3 A/B

Protein Name LC3 A/B

Organism

Gene ID

UniProt ID

Human

[Q9H492](#); [Q9GZQ8](#);

Cellular Localization

Cytoplasmic vesicle, autophagosome membrane ; Lipid-anchor . Endomembrane system ; Lipid-anchor . Cytoplasm, cytoskeleton . LC3-II binds to the autophagic membranes. .

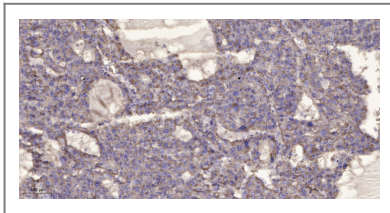
Tissue specificity

Most abundant in heart, brain, liver, skeletal muscle and testis but absent in thymus and peripheral blood leukocytes.

Function

autophagic vacuole formation, proteolysis, autophagy, vacuole organization, macromolecule catabolic process, cellular response to starvation, response to extracellular stimulus, macroautophagy, modification-dependent protein catabolic process, protein catabolic process, response to nutrient levels, cellular response to extracellular stimulus, cellular response to nutrient levels, cellular response to stress, response to starvation, modification-dependent macromolecule catabolic process, cellular protein catabolic process, cellular macromolecule catabolic process, proteolysis involved in cellular protein catabolic process,

Validation Data



Immunohistochemical analysis of paraffin-embedded human liver cancer. 1, Antibody was diluted at 1:200(4° overnight). 2, Tris-EDTA,pH9.0 was used for antigen retrieval. 3,Secondary antibody was diluted at 1:200(room temperature, 45min).

Contact information

Orders: order@immunoway.com
Support: tech@immunoway.com
Telephone: 877-594-3616 (Toll Free), 408-747-0185
Website: <http://www.immunoway.com>
Address: 2200 Ringwood Ave San Jose, CA 95131 USA



Please scan the QR code to access additional product information:
LC3 A/B Rabbit pAb

For Research Use Only. Not for Use in Diagnostic Procedures.

[Antibody](#) | [ELISA Kits](#) | [Protein](#) | [Reagents](#)