

SWS Rabbit pAb

CatalogNo: YT7934

Key Features

Host Species

- Rabbit

Reactivity

- Human,Rat,Mouse,

Applications

- WB,ELISA,IHC

MW

- 38kD (Observed)

Isotype

- IgG

Recommended Dilution Ratios

WB 1:500-2000**IHC 1:50-300****ELISA 1:2000-20000**

Storage

Storage* -15°C to -25°C/1 year(Do not lower than -25°C)**Formulation** Liquid in PBS containing 50% glycerol, 0.5% BSA and 0.02% sodium azide.

Basic Information

Clonality Polyclonal

Immunogen Information

Immunogen Synthesized peptide derived from human SWS**Specificity** This antibody detects endogenous levels of Human SWS

Target Information

Gene name OPN1SW BCP

Protein Name Short-wave-sensitive opsin 1 (Blue cone photoreceptor pigment) (Blue-sensitive opsin) (BOP)

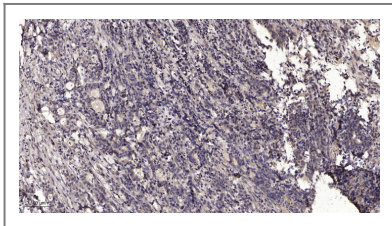
Organism	Gene ID	UniProt ID
Human	611 ;	P03999 ;
Mouse	12057 ;	P51491 ;
Rat	81644 ;	Q63652 ;

Cellular Localization Cell membrane ; Multi-pass membrane protein . Photoreceptor inner segment . Cell projection, cilium, photoreceptor outer segment . Cytoplasm, perinuclear region .

Tissue specificity The three color pigments are found in the cone photoreceptor cells (PubMed:2937147). Expressed throughout the epidermis and dermis, primarily in the stratum granulosum in the facial and abdominal skin (at protein level) (PubMed:30168605). Expressed in dermal fibroblasts (at protein level) (PubMed:31380578). Expressed in melanocytes (at protein level) (PubMed:31730232).

Function Disease:Defects in OPN1SW are the cause of tritan color blindness (tritanopia) [MIM:190900].,Function:Visual pigments are the light-absorbing molecules that mediate vision. They consist of an apoprotein, opsin, covalently linked to cis-retinal.,online information:Retina International's Scientific Newsletter,PTM:Phosphorylated on some or all of the serine and threonine residues present in the C-terminal region.,similarity:Belongs to the G-protein coupled receptor 1 family.,similarity:Belongs to the G-protein coupled receptor 1 family. Opsin subfamily.,tissue specificity:The three color pigments are found in the cone photoreceptor cells.,

Validation Data



Immunohistochemical analysis of paraffin-embedded human Gastric adenocarcinoma. 1, Antibody was diluted at 1:200(4° overnight). 2, Tris-EDTA,pH9.0 was used for antigen retrieval. 3,Secondary antibody was diluted at 1:200(room temperature, 45min).

Contact information

Orders: order@immunoway.com
Support: tech@immunoway.com
Telephone: 877-594-3616 (Toll Free), 408-747-0185
Website: <http://www.immunoway.com>
Address: 2200 Ringwood Ave San Jose, CA 95131 USA



Please scan the QR code to access additional product information:
SWS Rabbit pAb

