

## RBP4 Rabbit pAb

CatalogNo: YT7861

### Key Features

#### Host Species

- Rabbit

#### Reactivity

- Human, Rat, Mouse,

#### Applications

- WB, IHC

#### MW

- 22kD (Calculated)

#### Isotype

- IgG

### Recommended Dilution Ratios

WB 1:500-2000

IHC 1:50-300

### Storage

**Storage\*** -15°C to -25°C/1 year(Do not lower than -25°C)

**Formulation** Liquid in PBS containing 50% glycerol, 0.5% BSA and 0.02% sodium azide.

### Basic Information

**Clonality** Polyclonal

### Immunogen Information

**Immunogen** Synthesized peptide derived from human RBP AA range: 11-60

**Specificity** This antibody detects endogenous levels of Human RBP

### Target Information

**Gene name** RBP4 PRO2222

**Protein Name** Retinol-binding protein 4

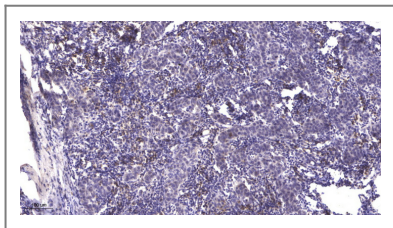
Organism	Gene ID	UniProt ID
Human	<a href="#">5950;</a>	<a href="#">P02753;</a>
Mouse	<a href="#">19662;</a>	<a href="#">Q00724;</a>
Rat	<a href="#">25703;</a>	<a href="#">P04916;</a>

**Cellular Localization** Secreted .

**Tissue specificity** Detected in blood plasma and in urine (at protein level).

**Function** Disease:A deficiency of vitamin A blocks secretion of the binding protein post-translationally and results in defective delivery and supply of vitamin to the epidermal cells (a condition associated with a dermatosis).,Disease:Defects in RBP4 are a cause of retinol-binding protein deficiency [MIM:180250]. This condition causes night vision problems. It produces a typical "fundus xerophthalmicus," featuring a progressed atrophy of the retinal pigment epithelium.,Function:Delivers retinol from the liver stores to the peripheral tissues. In plasma, the RBP-retinol complex interacts with transthyretin, this prevents its loss by filtration through the kidney glomeruli.,mass spectrometry: PubMed:12237133,mass spectrometry: PubMed:7666002,online information:Retina International's Scientific Newsletter,online information:Retinol-binding protein 4 entry,similarity:Belongs to the calycin superfamily. Lipocalin family.,

## Validation Data



Immunohistochemical analysis of paraffin-embedded human Breast cancer. 1, Antibody was diluted at 1:200(4° overnight). 2, Tris-EDTA,pH9.0 was used for antigen retrieval. 3,Secondary antibody was diluted at 1:200(room temperature, 45min).

## Contact information

Orders: [order@immunoway.com](mailto:order@immunoway.com)  
Support: [tech@immunoway.com](mailto:tech@immunoway.com)  
Telephone: 877-594-3616 (Toll Free), 408-747-0185  
Website: <http://www.immunoway.com>  
Address: 2200 Ringwood Ave San Jose, CA 95131 USA



Please scan the QR code to access additional product information:  
**RBP4 Rabbit pAb**