

## MYCT Rabbit pAb

CatalogNo: YT7757

### Key Features

#### Host Species

- Rabbit

#### Reactivity

- Human, Mouse, Rat

#### Applications

- WB, IHC

#### MW

- 71kD (Calculated)

#### Isotype

- IgG

### Recommended Dilution Ratios

WB 1:500-2000

IHC 1:50-300

### Storage

**Storage\*** -15°C to -25°C/1 year (Do not lower than -25°C)

**Formulation** Liquid in PBS containing 50% glycerol, 0.5% BSA and 0.02% sodium azide.

### Basic Information

**Clonality** Polyclonal

### Immunogen Information

**Immunogen** Synthesized peptide derived from human MYCT AA range: 352-402

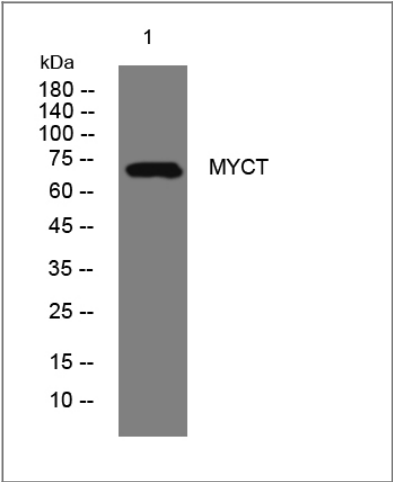
**Specificity** This antibody detects endogenous levels of MYCT at Human/Mouse/Rat

### Target Information

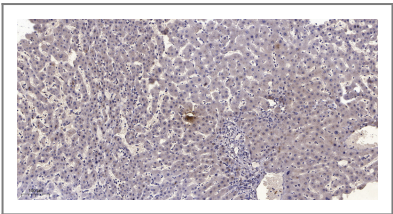
**Gene name** SLC2A13

<b>Protein Name</b>	MYCT		
	<b>Organism</b>	<b>Gene ID</b>	<b>UniProt ID</b>
	Human	<a href="#">114134</a> ;	<a href="#">Q96QE2</a> ;
	Mouse	<a href="#">239606</a> ;	<a href="#">Q3UHK1</a> ;
	Rat	<a href="#">171147</a> ;	<a href="#">Q921A2</a> ;
<b>Cellular Localization</b>	Cell membrane ; Multi-pass membrane protein .		
<b>Tissue specificity</b>	Predominantly expressed in the brain.		
<b>Function</b>	Function:H(+)-myo-inositol cotransporter. Can also transport related stereoisomers.,PTM:Glycosylated.,similarity:Belongs to the major facilitator superfamily. Sugar transporter (TC 2.A.1.1) family.,tissue specificity:Predominantly expressed in the brain.,		

| Validation Data



Western blot analysis of lysates from HpeG2 cells, primary antibody was diluted at 1:1000, 4°over night



Immunohistochemical analysis of paraffin-embedded human liver cancer. 1, Antibody was diluted at 1:200(4° overnight). 2, Tris-EDTA,pH9.0 was used for antigen retrieval. 3,Secondary antibody was diluted at 1:200(room temperature, 45min).

| Contact information

Orders: order@immunoway.com  
Support: tech@immunoway.com  
Telephone: 877-594-3616 (Toll Free), 408-747-0185  
Website: http://www.immunoway.com  
Address: 2200 Ringwood Ave San Jose, CA 95131 USA



Please scan the QR code  
to access additional  
product information:  
**MYCT Rabbit pAb**

---

For Research Use Only. Not for Use in Diagnostic Procedures.

[Antibody](#) | [ELISA Kits](#) | [Protein](#) | [Reagents](#)