

DEPD4 Rabbit pAb

CatalogNo: YT7748

Key Features

Host Species

- Rabbit

Reactivity

- Human

Applications

- WB

MW

- 32kD (Calculated)

Isotype

- IgG

Recommended Dilution Ratios

WB 1:500-2000

Storage

Storage* -15°C to -25°C/1 year(Do not lower than -25°C)

Formulation Liquid in PBS containing 50% glycerol, 0.5% BSA and 0.02% sodium azide.

Basic Information

Clonality Polyclonal

Immunogen Information

Immunogen Synthesized peptide derived from human DEPDC4 AA range: 228-278

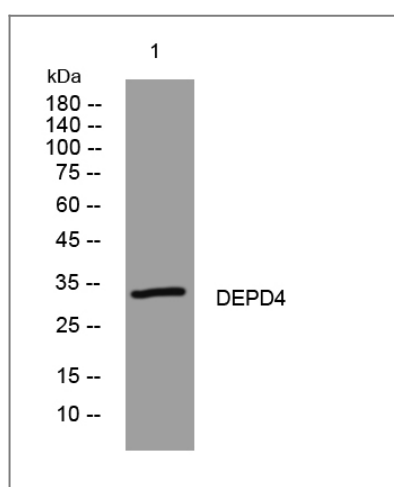
Specificity This antibody detects endogenous levels of DEPDC4 at Human

Target Information

Gene name DEPDC4

Protein Name	DEPD4		
	Organism	Gene ID	UniProt ID
	Human	120863 ;	Q8N2C3 ;
Cellular Localization	intracellular,		
Function	similarity:Contains 1 DEP domain.,		

Validation Data



Western blot analysis of lysates from DU145 cells, primary antibody was diluted at 1:1000, 4°over night

Contact information

Orders: order@immunoway.com
 Support: tech@immunoway.com
 Telephone: 877-594-3616 (Toll Free), 408-747-0185
 Website: <http://www.immunoway.com>
 Address: 2200 Ringwood Ave San Jose, CA 95131 USA



Please scan the QR code to access additional product information:
DEPD4 Rabbit pAb

For Research Use Only. Not for Use in Diagnostic Procedures.

[Antibody](#) | [ELISA Kits](#) | [Protein](#) | [Reagents](#)