

LRRT4 Rabbit pAb

CatalogNo: YT7744

Key Features

Host Species

- Rabbit

Reactivity

- Human, Mouse, Rat

Applications

- WB, ELISA, IHC

MW

- 65kD (Calculated)

Isotype

- IgG

Recommended Dilution Ratios

WB 1:500-2000

IHC 1:50-300

ELISA 1:2000-20000

Storage

Storage*

-15°C to -25°C/1 year (Do not lower than -25°C)

Formulation

Liquid in PBS containing 50% glycerol, 0.5% BSA and 0.02% sodium azide.

Basic Information

Clonality

Polyclonal

Immunogen Information

Immunogen

Synthesized peptide derived from human LRRT4 AA range: 462-512

Specificity

This antibody detects endogenous levels of LRRT4 at Human/Mouse/Rat

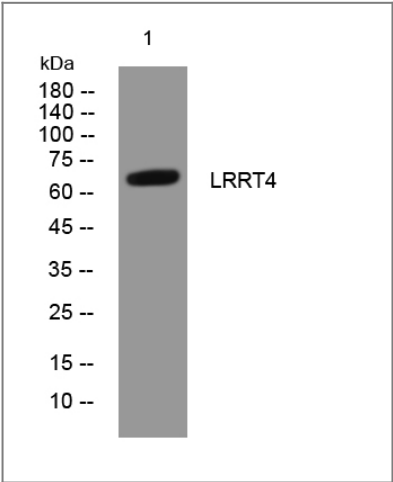
Target Information

Gene name

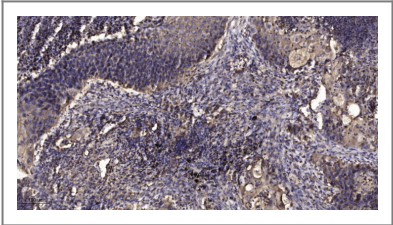
LRRTM4 UNQ3075/PRO9907

Protein Name	LRRT4		
	Organism	Gene ID	UniProt ID
	Human	80059;	Q86VH4;
	Mouse	243499;	Q80XG9;
	Rat	500219;	B4F7C5;
Cellular Localization	Cell membrane ; Single-pass type I membrane protein . Cell junction, synapse, postsynaptic cell membrane ; Single-pass type I membrane protein .		
Tissue specificity	Expressed in neuronal tissues.		
Function	Function:May play a role in the development and maintenance of the vertebrate nervous system.,similarity:Belongs to the LRRTM family.,similarity:Contains 10 LRR (leucine-rich) repeats.,tissue specificity:Expressed in neuronal tissues.,		

| Validation Data



Western blot analysis of lysates from Hela cells, primary antibody was diluted at 1:1000, 4°over night



Immunohistochemical analysis of paraffin-embedded human Squamous cell carcinoma of lung. 1, Antibody was diluted at 1:200(4° overnight). 2, Tris-EDTA,pH9.0 was used for antigen retrieval. 3,Secondary antibody was diluted at 1:200(room temperature, 45min).

| Contact information

Orders: order@immunoway.com
Support: tech@immunoway.com
Telephone: 877-594-3616 (Toll Free), 408-747-0185
Website: http://www.immunoway.com
Address: 2200 Ringwood Ave San Jose, CA 95131 USA



Please scan the QR code
to access additional
product information:
LRRT4 Rabbit pAb

For Research Use Only. Not for Use in Diagnostic Procedures.

[Antibody](#) | [ELISA Kits](#) | [Protein](#) | [Reagents](#)