

KR106 Rabbit pAb

CatalogNo: YT7738

Key Features

Host Species

- Rabbit

Reactivity

- Human

Applications

- WB,ELISA,IHC

MW

- 40kD (Calculated)

Isotype

- IgG

Recommended Dilution Ratios

WB 1:500-2000

IHC 1:50-300

ELISA 1:2000-20000

Storage

Storage* -15°C to -25°C/1 year(Do not lower than -25°C)

Formulation Liquid in PBS containing 50% glycerol, 0.5% BSA and 0.02% sodium azide.

Basic Information

Clonality Polyclonal

Immunogen Information

Immunogen Synthesized peptide derived from human KR106 AA range: 303-353

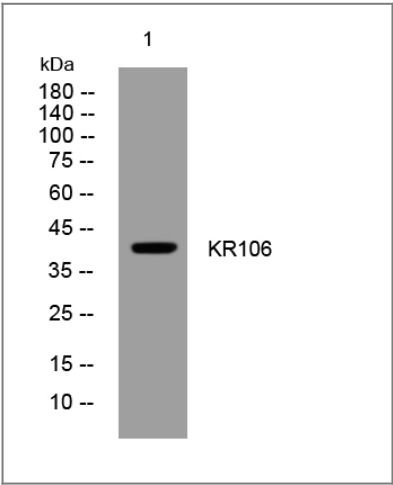
Specificity This antibody detects endogenous levels of KR106 at Human

Target Information

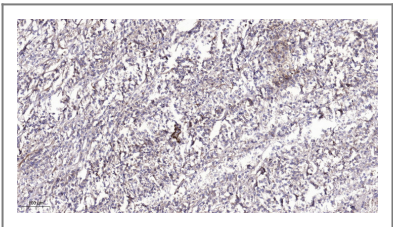
Gene name KRTAP10-6 KAP10.6 KAP18-6 KRTAP10.6 KRTAP18-6 KRTAP18.6

Protein Name	KR106		
	Organism	Gene ID	UniProt ID
	Human	386674 ;	P60371 ;
Cellular Localization	keratin filament,		
Tissue specificity	Restricted to a narrow region of the hair fiber cuticle, lying approximately 20 cell layers above the apex of the dermal papilla of the hair root; not detected in any other tissues.		
Function	Function:In the hair cortex, hair keratin intermediate filaments are embedded in an interfilamentous matrix, consisting of hair keratin-associated proteins (KRTAP), which are essential for the formation of a rigid and resistant hair shaft through their extensive disulfide bond cross-linking with abundant cysteine residues of hair keratins. The matrix proteins include the high-sulfur and high-glycine-tyrosine keratins.,similarity:Belongs to the KRTAP type 10 family.,subunit:Interacts with hair keratins.,tissue specificity:Restricted to a narrow region of the hair fiber cuticle, lying approximately 20 cell layers above the apex of the dermal papilla of the hair root; not detected in any other tissues.,		

| Validation Data



Western blot analysis of lysates from MCF-7 cells, primary antibody was diluted at 1:1000, 4°over night



Immunohistochemical analysis of paraffin-embedded human Colon cancer. 1, Antibody was diluted at 1:200(4° overnight). 2, Tris-EDTA,pH9.0 was used for antigen retrieval. 3,Secondary antibody was diluted at 1:200(room temperature, 45min).

| Contact information

Orders: order@immunoway.com
Support: tech@immunoway.com
Telephone: 877-594-3616 (Toll Free), 408-747-0185
Website: http://www.immunoway.com
Address: 2200 Ringwood Ave San Jose, CA 95131 USA



Please scan the QR code
to access additional
product information:
KR106 Rabbit pAb

For Research Use Only. Not for Use in Diagnostic Procedures.

[Antibody](#) | [ELISA Kits](#) | [Protein](#) | [Reagents](#)