

ZN560 Rabbit pAb

CatalogNo: YT7720

| Key Features

Host Species

- Rabbit

Reactivity

- Human

Applications

- WB

MW

- 87kD (Calculated)

Isotype

- IgG

| Recommended Dilution Ratios

WB 1:500-2000

| Storage

Storage*

-15°C to -25°C/1 year(Do not lower than -25°C)

Formulation

Liquid in PBS containing 50% glycerol, 0.5% BSA and 0.02% sodium azide.

| Basic Information

Clonality

Polyclonal

| Immunogen Information

Immunogen

Synthesized peptide derived from human ZN560 AA range: 665-715

Specificity

This antibody detects endogenous levels of ZN560 at Human

| Target Information

Gene name

ZNF560

Protein Name ZN560

Organism

Gene ID

UniProt ID

Human

[147741](#);

[Q96MR9](#);

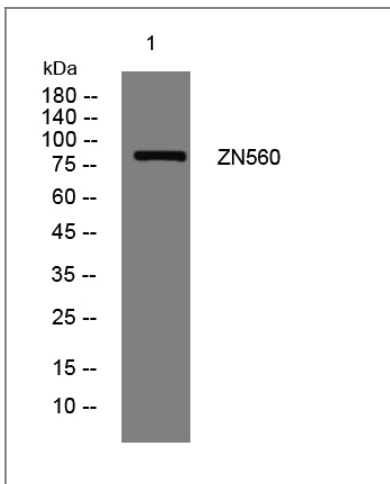
**Cellular
Localization**

Nucleus .

Function

Function:May be involved in transcriptional regulation.,similarity:Belongs to the krueppel C2H2-type zinc-finger protein family.,similarity:Contains 15 C2H2-type zinc fingers.,similarity:Contains 2 KRAB domains.,

Validation Data



Western blot analysis of lysates from A431 cells, primary antibody was diluted at 1:1000, 4°over night

Contact information

Orders: order@immunoway.com
Support: tech@immunoway.com
Telephone: 877-594-3616 (Toll Free), 408-747-0185
Website: <http://www.immunoway.com>
Address: 2200 Ringwood Ave San Jose, CA 95131 USA



Please scan the QR code to access additional product information:
ZN560 Rabbit pAb

For Research Use Only. Not for Use in Diagnostic Procedures.

[Antibody](#) | [ELISA Kits](#) | [Protein](#) | [Reagents](#)