

## UNKL Rabbit pAb

CatalogNo: YT7712

### | Key Features

#### Host Species

- Rabbit

#### Reactivity

- Human, Mouse

#### Applications

- WB

#### MW

- 75kD (Calculated)

#### Isotype

- IgG

### | Recommended Dilution Ratios

WB 1:500-2000

### | Storage

**Storage\*** -15°C to -25°C/1 year (Do not lower than -25°C)

**Formulation** Liquid in PBS containing 50% glycerol, 0.5% BSA and 0.02% sodium azide.

### | Basic Information

**Clonality** Polyclonal

### | Immunogen Information

**Immunogen** Synthesized peptide derived from human UNKL AA range: 296-346

**Specificity** This antibody detects endogenous levels of UNKL at Human/Mouse

### | Target Information

**Gene name** UNKL C16orf28 ZC3H5L ZC3HDC5L

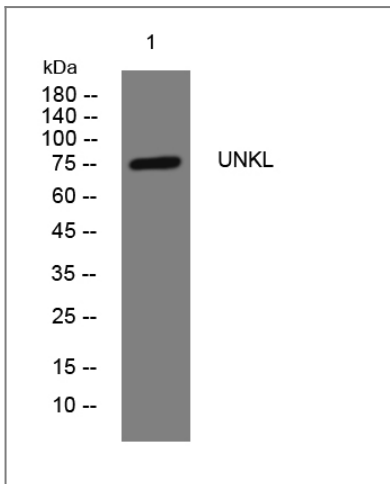
**Protein Name** UNKL

Organism	Gene ID	UniProt ID
Human	<a href="#">64718;</a>	<a href="#">Q9H9P5;</a>
Mouse	<a href="#">74154;</a>	<a href="#">Q5FWH2;</a>

**Cellular Localization** [Isoform 4]: Cytoplasm. Nucleus. Isoform 4 is primarily localized in the cytoplasm but has the ability to shuttle between the nucleus and the cytoplasm.

**Function** similarity:Belongs to the unkempt family.,similarity:Contains 1 RING-type zinc finger.,

## Validation Data



Western blot analysis of lysates from KB cells, primary antibody was diluted at 1:1000, 4°over night

## Contact information

Orders: [order@immunoway.com](mailto:order@immunoway.com)  
Support: [tech@immunoway.com](mailto:tech@immunoway.com)  
Telephone: 877-594-3616 (Toll Free), 408-747-0185  
Website: <http://www.immunoway.com>  
Address: 2200 Ringwood Ave San Jose, CA 95131 USA



Please scan the QR code to access additional product information:  
**UNKL Rabbit pAb**

For Research Use Only. Not for Use in Diagnostic Procedures.

[Antibody](#) | [ELISA Kits](#) | [Protein](#) | [Reagents](#)