

## PA2GC Rabbit pAb

CatalogNo: YT7702

### | Key Features

#### Host Species

- Rabbit

#### Reactivity

- Human, Mouse, Rat

#### Applications

- WB

#### MW

- 16kD (Calculated)

#### Isotype

- IgG

### | Recommended Dilution Ratios

WB 1:500-2000

### | Storage

**Storage\*** -15°C to -25°C/1 year (Do not lower than -25°C)

**Formulation** Liquid in PBS containing 50% glycerol, 0.5% BSA and 0.02% sodium azide.

### | Basic Information

**Clonality** Polyclonal

### | Immunogen Information

**Immunogen** Synthesized peptide derived from human PA2GC AA range: 44-94

**Specificity** This antibody detects endogenous levels of PA2GC at Human/Mouse/Rat

### | Target Information

**Gene name** PLA2G2C

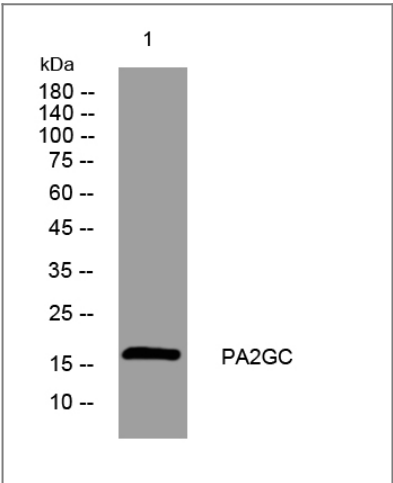
Protein Name PA2GC

Organism	Gene ID	UniProt ID
Human		<a href="#">Q5R387</a> ;
Mouse	<a href="#">18781</a> ;	<a href="#">P48076</a> ;
Rat	<a href="#">29387</a> ;	<a href="#">P39878</a> ;

Cellular Localization Secreted .

Function Caution:Could be the product of a pseudogene. Lacks the typical His active site in position 68 that is replaced by a Ser residue, preventing the hydrolase activity.,cofactor:Binds 1 calcium ion per subunit.,Function:Inactive phospholipase.,similarity:Belongs to the phospholipase A2 family.,

Validation Data



Western blot analysis of lysates from Hela cells, primary antibody was diluted at 1:1000, 4°over night

Contact information

Orders: order@immunoway.com  
Support: tech@immunoway.com  
Telephone: 877-594-3616 (Toll Free), 408-747-0185  
Website: http://www.immunoway.com  
Address: 2200 Ringwood Ave San Jose, CA 95131 USA



Please scan the QR code to access additional product information:  
**PA2GC Rabbit pAb**