

RLGPB Rabbit pAb

CatalogNo: YT7687

| Key Features

Host Species

- Rabbit

Reactivity

- Human, Mouse, Rat

Applications

- WB

MW

- 164kD (Calculated)

Isotype

- IgG

| Recommended Dilution Ratios

WB 1:500-2000

| Storage

Storage*

-15°C to -25°C/1 year (Do not lower than -25°C)

Formulation

Liquid in PBS containing 50% glycerol, 0.5% BSA and 0.02% sodium azide.

| Basic Information

Clonality

Polyclonal

| Immunogen Information

Immunogen

Synthesized peptide derived from human RLGPB AA range: 1435-1485

Specificity

This antibody detects endogenous levels of RLGPB at Human/Mouse/Rat

| Target Information

Gene name

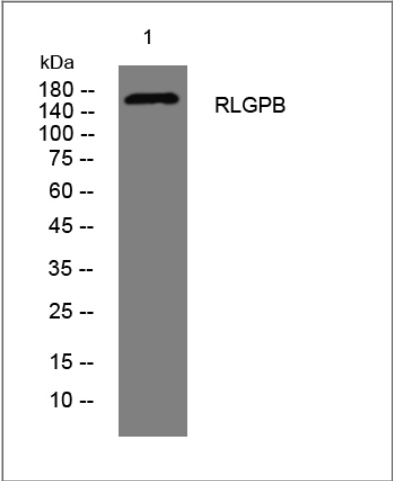
RALGAPB KIAA1219

Protein Name RLGPB

Organism	Gene ID	UniProt ID
Human	57148 ;	Q86X10 ;
Mouse	228850 ;	Q8BQZ4 ;
Rat		P86410 ;

Tissue specificity Highly expressed in brain, mostly in amygdala.

Validation Data



Western blot analysis of lysates from HuvEc cells, primary antibody was diluted at 1:1000, 4°over night

Contact information

Orders: order@immunoway.com
Support: tech@immunoway.com
Telephone: 877-594-3616 (Toll Free), 408-747-0185
Website: http://www.immunoway.com
Address: 2200 Ringwood Ave San Jose, CA 95131 USA



Please scan the QR code to access additional product information:
RLGPB Rabbit pAb

For Research Use Only. Not for Use in Diagnostic Procedures.

[Antibody](#) | [ELISA Kits](#) | [Protein](#) | [Reagents](#)