

GPN1 Rabbit pAb

CatalogNo: YT7679

| Key Features

Host Species

- Rabbit

Reactivity

- Human, Mouse

Applications

- WB

MW

- 41kD (Calculated)

Isotype

- IgG

| Recommended Dilution Ratios

WB 1:500-2000

| Storage

Storage*

-15°C to -25°C/1 year (Do not lower than -25°C)

Formulation

Liquid in PBS containing 50% glycerol, 0.5% BSA and 0.02% sodium azide.

| Basic Information

Clonality

Polyclonal

| Immunogen Information

Immunogen

Synthesized peptide derived from human GPN1 AA range: 24-74

Specificity

This antibody detects endogenous levels of GPN1 at Human/Mouse

| Target Information

Gene name

GPN1 MBDIN XAB1 HUSSY-23

Protein Name GPN1

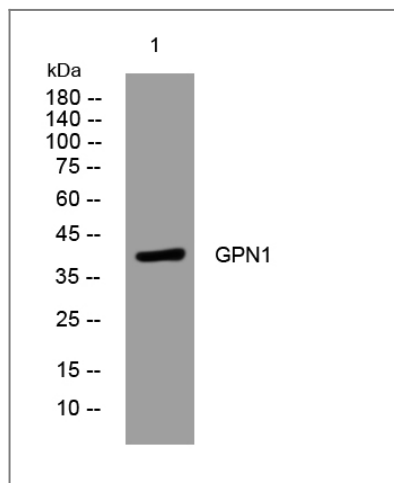
Organism	Gene ID	UniProt ID
Human	11321 ;	Q9HCN4 ;
Mouse	74254 ;	Q8VCE2 ;

Cellular Localization Cytoplasm . Nucleus . Shuttles between the nucleus and the cytoplasm. .

Tissue specificity Expressed ubiquitously.

Function Caution:The sequence shown here is derived from an Ensembl automatic analysis pipeline and should be considered as preliminary data.,Function:Forms an interface between the RNA polymerase II enzyme and chaperone/scaffolding protein, suggesting that it is required to connect RNA polymerase II to regulators of protein complex formation. May be involved in nuclear localization of XPA.,similarity:Belongs to the GPN-loop GTPase family.,subunit:Tightly associated with the RNA polymerase II complex. Interacts with XPA.,tissue specificity:Expressed ubiquitously.,

Validation Data



Western blot analysis of lysates from HeLa cells, primary antibody was diluted at 1:1000, 4° over night

Contact information

Orders: order@immunoway.com
Support: tech@immunoway.com
Telephone: 877-594-3616 (Toll Free), 408-747-0185
Website: <http://www.immunoway.com>
Address: 2200 Ringwood Ave San Jose, CA 95131 USA



Please scan the QR code to access additional product information:
GPN1 Rabbit pAb

