

PHAR3 Rabbit pAb

CatalogNo: YT7672

Key Features

Host Species

- Rabbit

Reactivity

- Human, Mouse, Rat

Applications

- WB, ELISA, IHC

MW

- 61kD (Calculated)

Isotype

- IgG

Recommended Dilution Ratios

WB 1:500-2000**IHC 1:50-300****ELISA 1:2000-20000**

Storage

Storage*

-15°C to -25°C/1 year(Do not lower than -25°C)

Formulation

Liquid in PBS containing 50% glycerol, 0.5% BSA and 0.02% sodium azide.

Basic Information

Clonality

Polyclonal

Immunogen Information

Immunogen

Synthesized peptide derived from human PHAR3 AA range: 260-310

Specificity

This antibody detects endogenous levels of PHAR3 at Human/Mouse/Rat

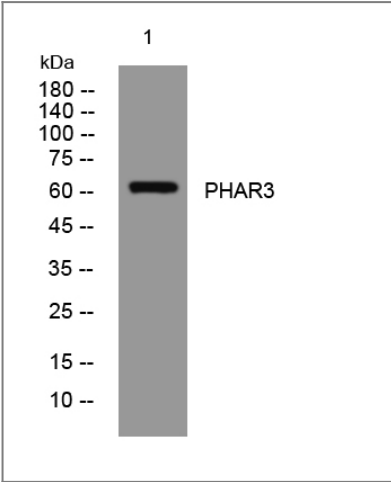
Target Information

Gene name

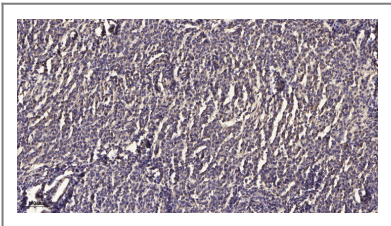
PHACTR3 C20orf101 SCAPIN1

Protein Name	PHAR3		
	Organism	Gene ID	UniProt ID
	Human	116154;	Q96KR7;
	Mouse	74189;	Q8BYK5;
	Rat	362284;	Q6RFY2;
Cellular Localization	Nucleus matrix. Localized to the nuclear matrix-intermediate filament scaffold. Isoform 2 is also found in some cytoplasmic extensions.		
Tissue specificity	Abundantly expressed in brain. Also found in several tumors such as lung carcinomas, nervous tumors and HL-60 leukemia cells. Isoform 3 is the major form in U-937, GOTO and HL-60 leukemia cells.		
Function	induction:Down-regulated in HL-60 leukemia cells by RA, PMA and dimethyl sulfoxide.,similarity:Belongs to the phosphatase and actin regulator family.,similarity:Contains 4 RPEL repeats.,subcellular location:Localized to the nuclear matrix-intermediate filament scaffold. Isoform 2 is also found in some cytoplasmic extensions.,subunit:Bounds actin and PPP1CA; thus inhibiting the protein phosphatase 1 (PP1) activity.,tissue specificity:Abundantly expressed in brain. Also found in several tumors such as lung carcinomas, nervous tumors and HL-60 leukemia cells. Isoform 3 is the major form in U937, GOTO and HL-60 leukemia cells.,		

Validation Data



Western blot analysis of lysates from MCF-7 cells, primary antibody was diluted at 1:1000, 4° over night



Immunohistochemical analysis of paraffin-embedded human meningioma. 1, Antibody was diluted at 1:200(4° overnight). 2, Tris-EDTA,pH9.0 was used for antigen retrieval. 3,Secondary antibody was diluted at 1:200(room temperature, 45min).

| Contact information

Orders: order@immunoway.com
Support: tech@immunoway.com
Telephone: 877-594-3616 (Toll Free), 408-747-0185
Website: <http://www.immunoway.com>
Address: 2200 Ringwood Ave San Jose, CA 95131 USA



Please scan the QR code
to access additional
product information:
PHAR3 Rabbit pAb

For Research Use Only. Not for Use in Diagnostic Procedures.

[Antibody](#) | [ELISA Kits](#) | [Protein](#) | [Reagents](#)