

## ABR Rabbit pAb

CatalogNo: YT7664

### Key Features

#### Host Species

- Rabbit

#### Reactivity

- Human, Mouse

#### Applications

- WB

#### MW

- 94kD (Calculated)

#### Isotype

- IgG

### Recommended Dilution Ratios

WB 1:500-2000

### Storage

**Storage\*** -15°C to -25°C/1 year (Do not lower than -25°C)

**Formulation** Liquid in PBS containing 50% glycerol, 0.5% BSA and 0.02% sodium azide.

### Basic Information

**Clonality** Polyclonal

### Immunogen Information

**Immunogen** Synthesized peptide derived from human ABR AA range: 393-443

**Specificity** This antibody detects endogenous levels of ABR at Human/Mouse

### Target Information

**Gene name** ABR

Protein Name      ABR

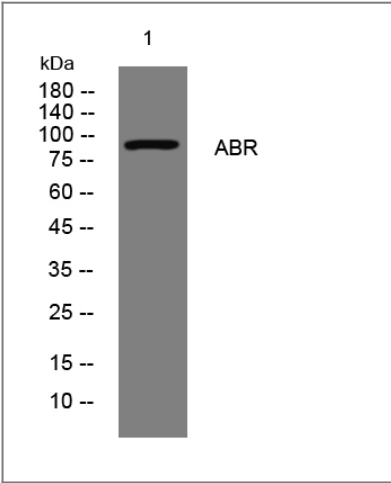
Organism	Gene ID	UniProt ID
Human	<a href="#">29;</a>	<a href="#">Q12979;</a>
Mouse	<a href="#">109934;</a>	<a href="#">Q5SSL4;</a>

**Cellular Localization**      Cell projection, dendritic spine . Cell projection, axon . Cell junction, synapse .

**Tissue specificity**      Highly enriched in the brain. Much weaker expression in heart, lung and muscle.

**Function**      Function:GTPase-activating protein for RAC and CDC42. Promotes the exchange of RAC or CDC42-bound GDP by GTP, thereby activating them.,similarity:Contains 1 C2 domain.,similarity:Contains 1 DH (DBL-homology) domain.,similarity:Contains 1 PH domain.,similarity:Contains 1 Rho-GAP domain.,tissue specificity:Highly enriched in the brain. Much weaker expression in heart, lung and muscle.,

| Validation Data



Western blot analysis of lysates from HeLa cells, primary antibody was diluted at 1:1000, 4°over night

| Contact information

Orders:            order@immunoway.com  
Support:          tech@immunoway.com  
Telephone:       877-594-3616 (Toll Free), 408-747-0185  
Website:          http://www.immunoway.com  
Address:          2200 Ringwood Ave San Jose, CA 95131 USA



Please scan the QR code to access additional product information:  
**ABR Rabbit pAb**