

## ORML3 Rabbit pAb

CatalogNo: YT7649

### | Key Features

#### Host Species

- Rabbit

#### Reactivity

- Human, Mouse, Rat

#### Applications

- WB

#### MW

- 17kD (Calculated)

#### Isotype

- IgG

### | Recommended Dilution Ratios

WB 1:500-2000

### | Storage

**Storage\*** -15°C to -25°C/1 year (Do not lower than -25°C)

**Formulation** Liquid in PBS containing 50% glycerol, 0.5% BSA and 0.02% sodium azide.

### | Basic Information

**Clonality** Polyclonal

### | Immunogen Information

**Immunogen** Synthesized peptide derived from human ORML3 AA range: 98-148

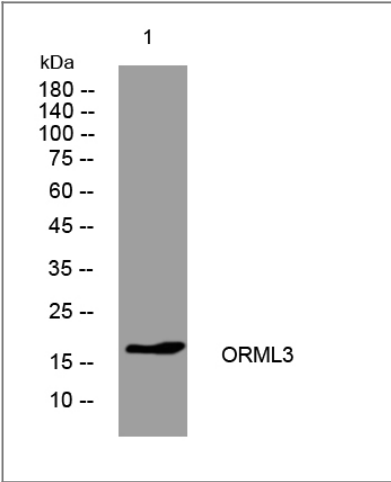
**Specificity** This antibody detects endogenous levels of ORML3 at Human/Mouse/Rat

### | Target Information

**Gene name** ORMDL3

<b>Protein Name</b>	ORML3		
	<b>Organism</b>	<b>Gene ID</b>	<b>UniProt ID</b>
	Human	<a href="#">94103;</a>	<a href="#">Q8N138;</a>
	Mouse	<a href="#">66612;</a>	<a href="#">Q9CPZ6;</a>
	Rat	<a href="#">360618;</a>	<a href="#">Q6QI25;</a>
<b>Cellular Localization</b>	Endoplasmic reticulum membrane ; Multi-pass membrane protein .		
<b>Tissue specificity</b>	Widely expressed. Expressed in adult and fetal heart, brain, lung, liver, skeletal muscle and kidney. Expressed in adult pancreas and placenta and in fetal spleen abd thymus.		
<b>Function</b>	similarity:Belongs to the ORM family.,tissue specificity:Widely expressed. Expressed in adult and fetal heart, brain, lung, liver, skeletal muscle and kidney. Expressed in adult pancreas and placenta and in fetal spleen abd thymus.,		

| Validation Data



Western blot analysis of lysates from CACO2 cells, primary antibody was diluted at 1:1000, 4°over night

| Contact information

Orders:
Support:
Telephone:
Website:
Address:

order@immunoway.com
tech@immunoway.com
877-594-3616 (Toll Free), 408-747-0185
http://www.immunoway.com
2200 Ringwood Ave San Jose, CA 95131 USA



Please scan the QR code to access additional product information:  
**ORML3 Rabbit pAb**

