

PHF13 Rabbit pAb

CatalogNo: YT7646

Key Features

Host Species

- Rabbit

Reactivity

- Human, Mouse

Applications

- WB, IHC

MW

- 33kD (Calculated)

Isotype

- IgG

Recommended Dilution Ratios

WB 1:500-2000

IHC 1:50-300

Storage

Storage* -15°C to -25°C/1 year (Do not lower than -25°C)

Formulation Liquid in PBS containing 50% glycerol, 0.5% BSA and 0.02% sodium azide.

Basic Information

Clonality Polyclonal

Immunogen Information

Immunogen Synthesized peptide derived from human PHF13 AA range: 206-256

Specificity This antibody detects endogenous levels of PHF13 at Human/Mouse

Target Information

Gene name PHF13

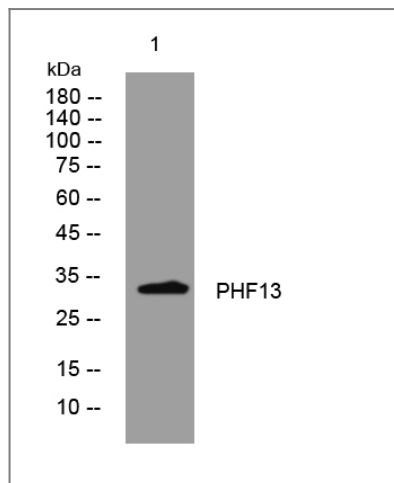
Protein Name PHF13

Organism	Gene ID	UniProt ID
Human	148479 ;	Q86Y18 ;
Mouse	230936 ;	Q8K2W6 ;

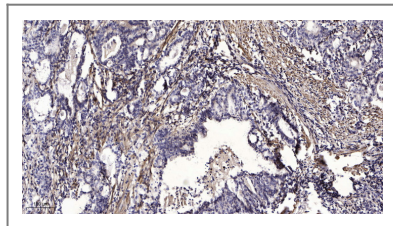
Cellular Localization Nucleus . Nucleus, nucleoplasm . Predominantly bound to chromatin, but a minor proportion is also detected in the nucleoplasm.

Function similarity:Contains 1 PHD-type zinc finger.,

Validation Data



Western blot analysis of lysates from U2OS cells, primary antibody was diluted at 1:1000, 4° over night



Immunohistochemical analysis of paraffin-embedded human Gastric adenocarcinoma. 1, Antibody was diluted at 1:200(4° overnight). 2, Tris-EDTA, pH9.0 was used for antigen retrieval. 3, Secondary antibody was diluted at 1:200(room temperature, 45min).

Contact information

Orders: order@immunoway.com
Support: tech@immunoway.com
Telephone: 877-594-3616 (Toll Free), 408-747-0185
Website: <http://www.immunoway.com>
Address: 2200 Ringwood Ave San Jose, CA 95131 USA



Please scan the QR code to access additional product information:
PHF13 Rabbit pAb

