

## RP1 Rabbit pAb

CatalogNo: YT7629

### Key Features

#### Host Species

- Rabbit

#### Reactivity

- Human, Mouse

#### Applications

- WB, ELISA, IHC

#### MW

- 237kD (Calculated)

#### Isotype

- IgG

### Recommended Dilution Ratios

WB 1:500-2000

IHC 1:50-300

ELISA 1:2000-20000

### Storage

#### Storage\*

-15°C to -25°C/1 year (Do not lower than -25°C)

#### Formulation

Liquid in PBS containing 50% glycerol, 0.5% BSA and 0.02% sodium azide.

### Basic Information

#### Clonality

Polyclonal

### Immunogen Information

#### Immunogen

Synthesized peptide derived from human RP1 AA range: 1330-1380

#### Specificity

This antibody detects endogenous levels of RP1 at Human/Mouse

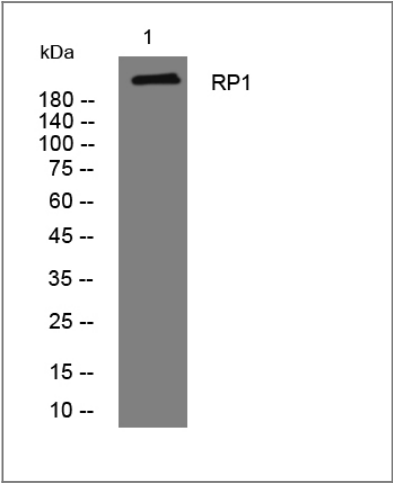
### Target Information

#### Gene name

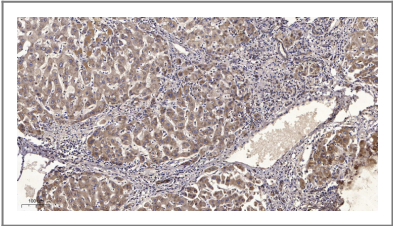
RP1 ORP1

Protein Name	RP1		
	Organism	Gene ID	UniProt ID
	Human	<a href="#">6101</a> ;	<a href="#">P56715</a> ;
	Mouse	<a href="#">19888</a> ;	<a href="#">P56716</a> ;
Cellular Localization	Cytoplasm, cytoskeleton, cilium axoneme . Cell projection, cilium, photoreceptor outer segment . Specifically localized in the connecting cilia of rod and cone photoreceptors.		
Tissue specificity	Expressed in retina. Not expressed in heart, brain, placenta, lung, liver, skeletal muscle, kidney, spleen and pancreas.		
Function	Disease:Defects in RP1 are the cause of retinitis pigmentosa type 1 (RP1) [MIM:180100]. RP leads to degeneration of retinal photoreceptor cells. Patients typically have night vision blindness and loss of midperipheral visual field. As their condition progresses, they lose their far peripheral visual field and eventually central vision as well.,Function:Could have a role in the differentiation of photoreceptor cells.,online information:Retina International's Scientific Newsletter,online information:Retinal information network,similarity:Contains 2 doublecortin domains.,tissue specificity:Expressed in retina. Not expressed in heart, brain, placenta, lung, liver, skeletal muscle, kidney, spleen and pancreas.,		

Validation Data



Western blot analysis of lysates from 293T cells, primary antibody was diluted at 1:1000, 4° over night



Immunohistochemical analysis of paraffin-embedded human liver cancer. 1, Antibody was diluted at 1:200(4° overnight). 2, Tris-EDTA,pH9.0 was used for antigen retrieval. 3,Secondary antibody was diluted at 1:200(room temperature, 45min).

Contact information

Orders: order@immunoway.com  
Support: tech@immunoway.com  
Telephone: 877-594-3616 (Toll Free), 408-747-0185  
Website: <http://www.immunoway.com>  
Address: 2200 Ringwood Ave San Jose, CA 95131 USA



Please scan the QR code  
to access additional  
product information:  
**RP1 Rabbit pAb**

---

For Research Use Only. Not for Use in Diagnostic Procedures.

[Antibody](#) | [ELISA Kits](#) | [Protein](#) | [Reagents](#)