

JOS2 Rabbit pAb

CatalogNo: YT7614

| Key Features

Host Species

- Rabbit

Reactivity

- Human, Mouse

Applications

- WB, IHC

MW

- 21kD (Calculated)

Isotype

- IgG

| Recommended Dilution Ratios

WB 1:500-2000

IHC 1:50-300

| Storage

Storage* -15°C to -25°C/1 year (Do not lower than -25°C)

Formulation Liquid in PBS containing 50% glycerol, 0.5% BSA and 0.02% sodium azide.

| Basic Information

Clonality Polyclonal

| Immunogen Information

Immunogen Synthesized peptide derived from human JOS2 AA range: 62-112

Specificity This antibody detects endogenous levels of JOS2 at Human/Mouse

| Target Information

Gene name JOSD2 SBB154

Protein Name JOS2

Organism

Gene ID

UniProt ID

Human

[126119;](#)

[Q8TAC2;](#)

Mouse

[66124;](#)

[Q9CR30;](#)

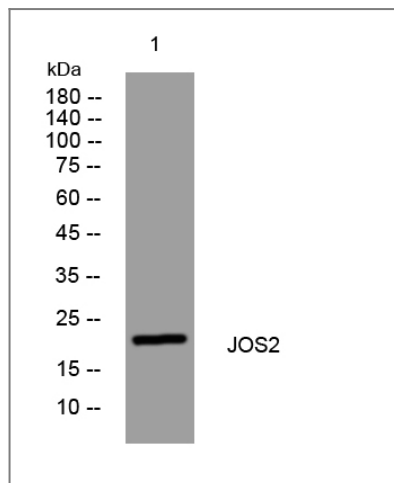
**Cellular
Localization**

Cytoplasm, cytosol .

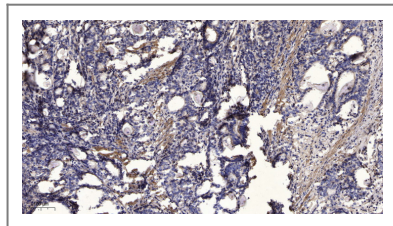
Function

similarity:Contains 1 Josephin domain.,

Validation Data



Western blot analysis of lysates from DU145 cells, primary antibody was diluted at 1:1000, 4° over night



Immunohistochemical analysis of paraffin-embedded human Gastric adenocarcinoma. 1, Antibody was diluted at 1:200(4° overnight). 2, Tris-EDTA, pH9.0 was used for antigen retrieval. 3, Secondary antibody was diluted at 1:200(room temperature, 45min).

Contact information

Orders: order@immunoway.com
Support: tech@immunoway.com
Telephone: 877-594-3616 (Toll Free), 408-747-0185
Website: <http://www.immunoway.com>
Address: 2200 Ringwood Ave San Jose, CA 95131 USA



Please scan the QR code
to access additional
product information:
JOS2 Rabbit pAb

