

RIMB1 Rabbit pAb

CatalogNo: YT7603

Key Features

Host Species

- Rabbit

Reactivity

- Human, Mouse, Rat

Applications

- WB, IHC

MW

- 204kD (Calculated)

Isotype

- IgG

Recommended Dilution Ratios

WB 1:500-2000

IHC 1:50-300

Storage

Storage* -15°C to -25°C/1 year (Do not lower than -25°C)

Formulation Liquid in PBS containing 50% glycerol, 0.5% BSA and 0.02% sodium azide.

Basic Information

Clonality Polyclonal

Immunogen Information

Immunogen Synthesized peptide derived from human RIMB1 AA range: 24-74

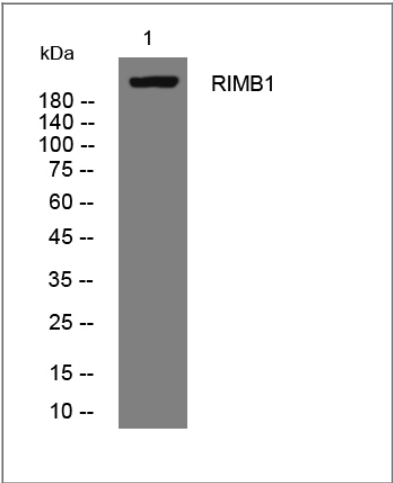
Specificity This antibody detects endogenous levels of RIMB1 at Human/Mouse/Rat

Target Information

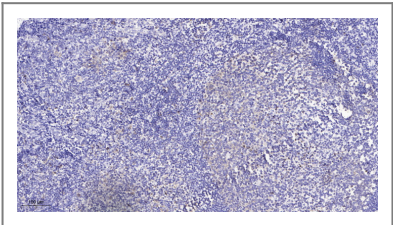
Gene name BZRAP1 KIAA0612 RBP1 RIMBP1

Protein Name	RIMB1		
	Organism	Gene ID	UniProt ID
	Human	9256 ;	O95153 ;
	Mouse	207777 ;	Q7TNF8 ;
	Rat		Q9JIR0 ;
Cellular Localization	Cytoplasm . Mitochondrion . Preferentially expressed in the mitochondria in the presence of TSPO.		
Tissue specificity	Predominantly expressed in brain, pituitary gland and thymus in adults. In adult brain, highest expression found in temporal lobe and the putamen, followed by amygdala, caudate nucleus, cerebral cortex, occipital and frontal lobe. A high expression level is also observed in fetal tissues like brain, heart, kidney and thymus.		
Function	Caution:PubMed:9915832 demonstrated interaction with BZRP but later PubMed:12435798 demonstrated in the rat ortholog that is not associated with BZRP in the brain.,Domain:The SH3 and proline-rich domain is required for the interaction with BZRP and the second SH3 domain mediates binding to a proline-rich motif in RIMS1 and RIMS2.,similarity:Belongs to the RIMBP family.,similarity:Contains 3 fibronectin type-III domains.,similarity:Contains 3 SH3 domains.,subcellular location:Preferentially expressed in the mitochondria in the presence of BZRP.,subunit:Interacts with RIMS1 and RIMS2 (By similarity). Interacts with BZRP.,tissue specificity:Predominantly expressed in brain, pituitary gland and thymus in adults. In adult brain, highest expression found in temporal lobe and the putamen, followed by amygdala, caudate nucleus, cerebral cortex, occipital and frontal lobe. A high expression level is also observed in fetal tissues like brain, heart, kidney and thymus.,		

Validation Data



Western blot analysis of lysates from Hela cells, primary antibody was diluted at 1:1000, 4°over night



Immunohistochemical analysis of paraffin-embedded human tonsil. 1, Antibody was diluted at 1:200(4° overnight). 2, Tris-EDTA,pH9.0 was used for antigen retrieval. 3,Secondary antibody was diluted at 1:200(room temperature, 45min).

| Contact information

Orders: order@immunoway.com
Support: tech@immunoway.com
Telephone: 877-594-3616 (Toll Free), 408-747-0185
Website: <http://www.immunoway.com>
Address: 2200 Ringwood Ave San Jose, CA 95131 USA



Please scan the QR code
to access additional
product information:
RIMB1 Rabbit pAb

For Research Use Only. Not for Use in Diagnostic Procedures.

[Antibody](#) | [ELISA Kits](#) | [Protein](#) | [Reagents](#)