

## SEN15 Rabbit pAb

CatalogNo: YT7577

### Key Features

**Host Species**

- Rabbit

**Reactivity**

- Human, Mouse

**Applications**

- WB, IHC

**MW**

- 19kD (Calculated)

**Isotype**

- IgG

### Recommended Dilution Ratios

**WB 1:500-2000****IHC 1:50-300**

### Storage

**Storage\***

-15°C to -25°C/1 year (Do not lower than -25°C)

**Formulation**

Liquid in PBS containing 50% glycerol, 0.5% BSA and 0.02% sodium azide.

### Basic Information

**Clonality**

Polyclonal

### Immunogen Information

**Immunogen**

Synthesized peptide derived from human SEN15 AA range: 84-134

**Specificity**

This antibody detects endogenous levels of SEN15 at Human/Mouse

### Target Information

**Gene name**

TSEN15 C1orf19 SEN15

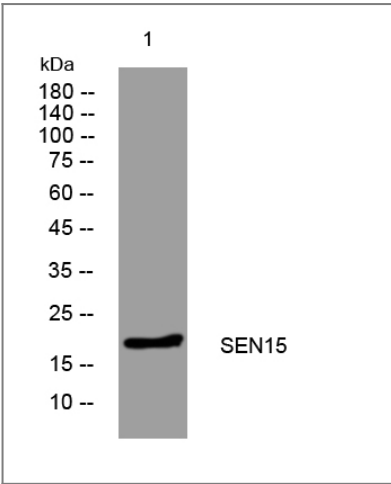
<b>Protein Name</b>	SEN15		
	<b>Organism</b>	<b>Gene ID</b>	<b>UniProt ID</b>
	Human	<a href="#">116461</a> ;	<a href="#">Q8WW01</a> ;
	Mouse	<a href="#">66637</a> ;	<a href="#">Q8R3W5</a> ;

**Cellular Localization** Nucleus . Nucleus, nucleolus . May be transiently localized in the nucleolus. .

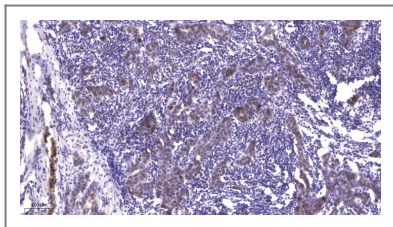
**Tissue specificity** Widely expressed. Highly expressed in testis and uterus.

**Function** Caution:Although only weakly related to the S.cerevisiae SEN15 protein, it probably displays the same function within the tRNA splicing endonuclease complex.,Function:Non-catalytic subunit of the tRNA-splicing endonuclease complex, a complex responsible for identification and cleavage of the splice sites in pre-tRNA. It cleaves pre-tRNA at the 5' and 3' splice sites to release the intron. The products are an intron and two tRNA half-molecules bearing 2',3' cyclic phosphate and 5'-OH termini. There are no conserved sequences at the splice sites, but the intron is invariably located at the same site in the gene, placing the splice sites an invariant distance from the constant structural features of the tRNA body. The tRNA splicing endonuclease is also involved in mRNA processing via its association with pre-mRNA 3' end processing factors, establishing a link between pre-tRNA splicing and pre-mRNA 3' end formation, suggesting that the endonuclease subunits function in multiple RNA-processing events.,similarity:Belongs to the SEN15 family.,subcellular location:May be transiently localized in the nucleolus.,subunit:tRNA splicing endonuclease is a heterotetramer composed of SEN2, SEN15, SEN34/LENG5 and SEN54. tRNA splicing endonuclease complex also contains proteins of the pre-mRNA 3' end processing machinery such as CLP1, CPSF1, CPSF4 and CSTF2.,tissue specificity:Widely expressed. Highly expressed in testis and uterus.,

## | Validation Data



Western blot analysis of lysates from HuvEc cells, primary antibody was diluted at 1:1000, 4°over night



Immunohistochemical analysis of paraffin-embedded human Breast cancer. 1, Antibody was diluted at 1:200(4° overnight). 2, Tris-EDTA,pH9.0 was used for antigen retrieval. 3,Secondary antibody was diluted at 1:200(room temperature, 45min).

## | Contact information

Orders: [order@immunoway.com](mailto:order@immunoway.com)  
Support: [tech@immunoway.com](mailto:tech@immunoway.com)  
Telephone: 877-594-3616 (Toll Free), 408-747-0185  
Website: <http://www.immunoway.com>  
Address: 2200 Ringwood Ave San Jose, CA 95131 USA



Please scan the QR code to access additional product information:  
**SEN15 Rabbit pAb**

---

For Research Use Only. Not for Use in Diagnostic Procedures.

[Antibody](#) | [ELISA Kits](#) | [Protein](#) | [Reagents](#)