

K1683 Rabbit pAb

CatalogNo: YT7575

Key Features

Host Species

- Rabbit

Reactivity

- Human, Mouse

Applications

- WB, IHC

MW

- 130kD (Calculated)

Isotype

- IgG

Recommended Dilution Ratios

WB 1:500-2000

IHC 1:50-300

Storage

Storage* -15°C to -25°C/1 year (Do not lower than -25°C)

Formulation Liquid in PBS containing 50% glycerol, 0.5% BSA and 0.02% sodium azide.

Basic Information

Clonality Polyclonal

Immunogen Information

Immunogen Synthesized peptide derived from human K1683 AA range: 328-378

Specificity This antibody detects endogenous levels of K1683 at Human

Target Information

Gene name KIAA1683

Protein Name K1683

Organism

Human

Gene ID

[80726;](#)

UniProt ID

[Q9H0B3;](#)

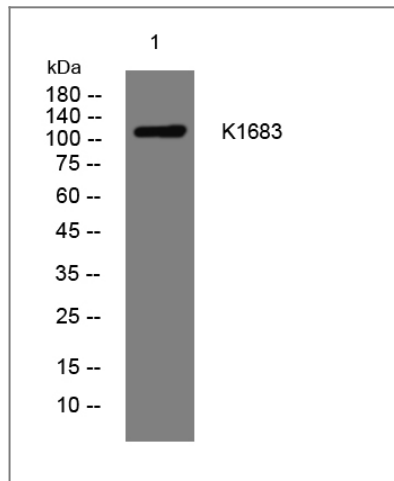
Cellular Localization

nucleus,mitochondrion,

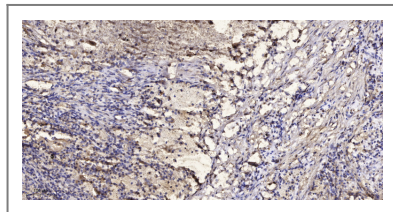
Function

PTM:Phosphorylated upon DNA damage, probably by ATM or ATR.,sequence Caution:Wrong choice of frame.,similarity:Contains 6 IQ domains.,

Validation Data



Western blot analysis of lysates from DU145 cells, primary antibody was diluted at 1:1000, 4°over night



Immunohistochemical analysis of paraffin-embedded human Squamous cell carcinoma of lung. 1, Antibody was diluted at 1:200(4° overnight). 2, Tris-EDTA,pH9.0 was used for antigen retrieval. 3,Secondary antibody was diluted at 1:200(room temperature, 45min).

Contact information

Orders: order@immunoway.com
Support: tech@immunoway.com
Telephone: 877-594-3616 (Toll Free), 408-747-0185
Website: <http://www.immunoway.com>
Address: 2200 Ringwood Ave San Jose, CA 95131 USA



Please scan the QR code to access additional product information:
K1683 Rabbit pAb