

RELL2 Rabbit pAb

CatalogNo: YT7562

Key Features

Host Species

- Rabbit

Reactivity

- Human, Mouse, Rat

Applications

- WB, ELISA, IHC

MW

- 33kD (Calculated)

Isotype

- IgG

Recommended Dilution Ratios

WB 1:500-2000

IHC 1:50-300

ELISA 1:2000-20000

Storage

Storage*

-15°C to -25°C/1 year (Do not lower than -25°C)

Formulation

Liquid in PBS containing 50% glycerol, 0.5% BSA and 0.02% sodium azide.

Basic Information

Clonality

Polyclonal

Immunogen Information

Immunogen

Synthesized peptide derived from human RELL2 AA range: 45-95

Specificity

This antibody detects endogenous levels of RELL2 at Human/Mouse/Rat

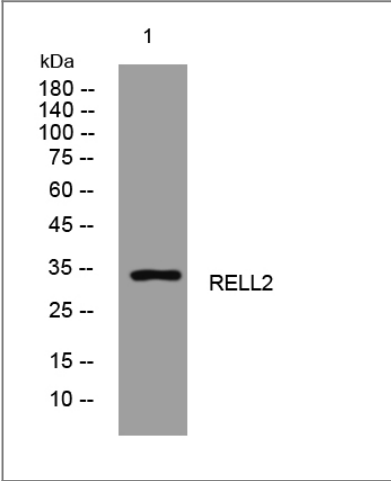
Target Information

Gene name

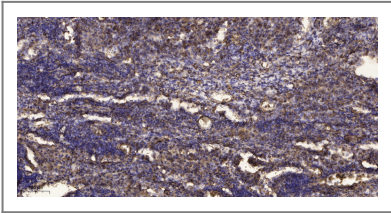
RELL2 C5orf16 UNQ9423/PRO34565

Protein Name	RELL2		
	Organism	Gene ID	UniProt ID
	Human	285613 ;	Q8NC24 ;
	Mouse	225392 ;	Q8BRJ3 ;
	Rat	361313 ;	Q5FVJ4 ;
Cellular Localization	Cell membrane ; Single-pass membrane protein .		
Tissue specificity	Primarily expressed in spleen, thymus, testis, peripheral blood leukocytes, brain and placenta. Not detected in prostate, ovary, small intestine, colon, heart, lung, liver, skeletal muscle, kidney and pancreas.		
Function	PTM:Phosphorylated in vitro by OXSR1.,similarity:Belongs to the RELT family.,subunit:Interacts with RELT, RELL1 and OXSR1.,tissue specificity:Primarily expressed in spleen, thymus, testis, peripheral blood leukocytes, brain and placenta. Not detected in prostate, ovary, small intestine, colon, heart, lung, liver, skeletal muscle, kidney and pancreas.,		

| Validation Data



Western blot analysis of lysates from MCF-7 cells, primary antibody was diluted at 1:1000, 4°over night



Immunohistochemical analysis of paraffin-embedded human Squamous cell carcinoma of lung. 1, Antibody was diluted at 1:200(4° overnight). 2, Tris-EDTA,pH9.0 was used for antigen retrieval. 3,Secondary antibody was diluted at 1:200(room temperature, 45min).

| Contact information

Orders: order@immunoway.com
Support: tech@immunoway.com
Telephone: 877-594-3616 (Toll Free), 408-747-0185
Website: http://www.immunoway.com
Address: 2200 Ringwood Ave San Jose, CA 95131 USA



Please scan the QR code
to access additional
product information:
RELL2 Rabbit pAb

For Research Use Only. Not for Use in Diagnostic Procedures.

[Antibody](#) | [ELISA Kits](#) | [Protein](#) | [Reagents](#)