

REXO4 Rabbit pAb

CatalogNo: YT7560

Key Features

Host Species

- Rabbit

Reactivity

- Human, Mouse

Applications

- WB, IHC

MW

- 46kD (Calculated)

Isotype

- IgG

Recommended Dilution Ratios

WB 1:500-2000

IHC 1:50-300

Storage

Storage* -15°C to -25°C/1 year (Do not lower than -25°C)

Formulation Liquid in PBS containing 50% glycerol, 0.5% BSA and 0.02% sodium azide.

Basic Information

Clonality Polyclonal

Immunogen Information

Immunogen Synthesized peptide derived from human REXO4 AA range: 312-362

Specificity This antibody detects endogenous levels of REXO4 at Human/Mouse

Target Information

Gene name REXO4 PMC2 XPMC2H

Protein Name REXO4

Organism

Gene ID

UniProt ID

Human

[57109;](#)

[Q9GZR2;](#)

Mouse

[227656;](#)

[Q6PAQ4;](#)

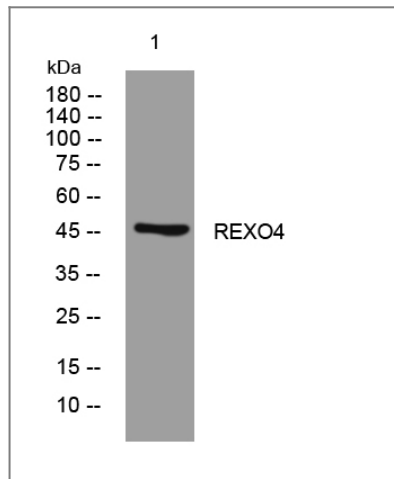
**Cellular
Localization**

Nucleus, nucleolus .

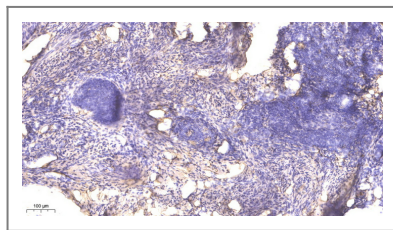
Function

similarity:Belongs to the REXO4 family.,similarity:Contains 1 exonuclease domain.,subunit:Can bind ESR1 and ESR2. This interaction is abrogated by estrogen and augmented by tamoxifen treatment.,

Validation Data



Western blot analysis of lysates from SW480 cells, primary antibody was diluted at 1:1000, 4° over night



Immunohistochemical analysis of paraffin-embedded human cervical carcinoma. 1, Antibody was diluted at 1:200(4° overnight). 2, Tris-EDTA,pH9.0 was used for antigen retrieval. 3,Secondary antibody was diluted at 1:200(room temperature, 45min).

Contact information

Orders: order@immunoway.com
Support: tech@immunoway.com
Telephone: 877-594-3616 (Toll Free), 408-747-0185
Website: <http://www.immunoway.com>
Address: 2200 Ringwood Ave San Jose, CA 95131 USA



Please scan the QR code to access additional product information:
REXO4 Rabbit pAb

