

ZSWM7 Rabbit pAb

CatalogNo: YT7547

| Key Features

Host Species

- Rabbit

Reactivity

- Human, Mouse

Applications

- WB

MW

- 15kD (Calculated)

Isotype

- IgG

| Recommended Dilution Ratios

WB 1:500-2000

| Storage

Storage* -15°C to -25°C/1 year (Do not lower than -25°C)

Formulation Liquid in PBS containing 50% glycerol, 0.5% BSA and 0.02% sodium azide.

| Basic Information

Clonality Polyclonal

| Immunogen Information

Immunogen Synthesized peptide derived from human ZSWM7 AA range: 68-118

Specificity This antibody detects endogenous levels of ZSWM7 at Human/Mouse

| Target Information

Gene name ZSWIM7 SWS1

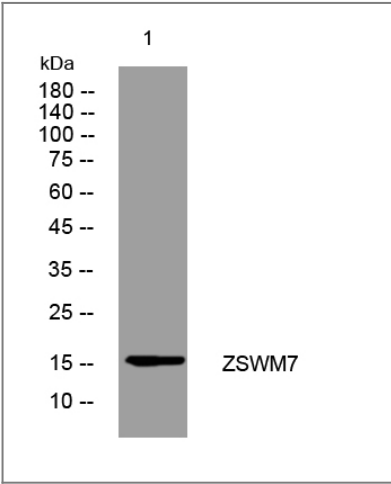
Protein Name ZSWM7

Organism	Gene ID	UniProt ID
Human	125150 ;	Q19AV6 ;
Mouse	69747 ;	Q9CWQ2 ;

Cellular Localization Nucleus .

Function Function:Involved in early stages of the homologous recombination repair (HRR) pathway of double-stranded DNA breaks arising during DNA replication or induced by DNA-damaging agents.,similarity:Belongs to the SWS1 family.,similarity:Contains 1 SWIM-type zinc finger.,subunit:Interacts with RAD51L3.,

| **Validation Data**



Western blot analysis of lysates from HpeG2 cells, primary antibody was diluted at 1:1000, 4°over night

| **Contact information**

Orders: order@immunoway.com
Support: tech@immunoway.com
Telephone: 877-594-3616 (Toll Free), 408-747-0185
Website: http://www.immunoway.com
Address: 2200 Ringwood Ave San Jose, CA 95131 USA



Please scan the QR code to access additional product information:
ZSWM7 Rabbit pAb