

GTDC1 Rabbit pAb

CatalogNo: YT7533

| Key Features

Host Species

- Rabbit

Reactivity

- Human, Mouse, Rat

Applications

- WB

MW

- 50kD (Calculated)

Isotype

- IgG

| Recommended Dilution Ratios

WB 1:500-2000

| Storage

Storage* -15°C to -25°C/1 year (Do not lower than -25°C)

Formulation Liquid in PBS containing 50% glycerol, 0.5% BSA and 0.02% sodium azide.

| Basic Information

Clonality Polyclonal

| Immunogen Information

Immunogen Synthesized peptide derived from human GTDC1 AA range: 273-323

Specificity This antibody detects endogenous levels of GTDC1 at Human/Mouse/Rat

| Target Information

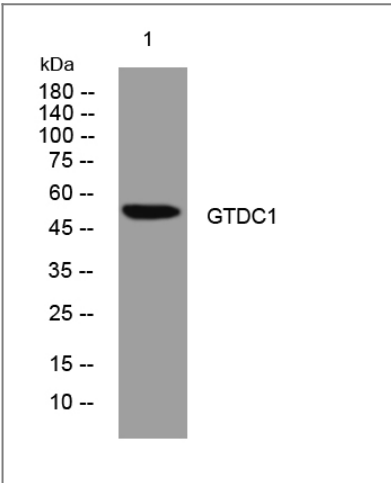
Gene name GTDC1

Protein Name	GTDC1		
	Organism	Gene ID	UniProt ID
	Human	79712;	Q4AE62;
	Mouse	227835;	Q8BW56;
	Rat	362129;	Q53E76;

Tissue specificity Ubiquitous. Expressed at high levels in the lung, brain, spleen, testis, placenta. ovary, pancreas, spleen and peripheral blood leukocytes. Expressed at low level in the colon, small intestine, kidney, skeletal muscle and thymus. Expressed at high level in colon adenocarcinoma.

Function similarity:Belongs to the glycosyltransferase 1 family.,tissue specificity:Ubiquitous. Expressed at high levels in the lung, spleen, testis and peripheral blood leukocytes.,

Validation Data



Western blot analysis of lysates from U2OS cells, primary antibody was diluted at 1:1000, 4°over night

Contact information

Orders: order@immunoway.com
 Support: tech@immunoway.com
 Telephone: 877-594-3616 (Toll Free), 408-747-0185
 Website: http://www.immunoway.com
 Address: 2200 Ringwood Ave San Jose, CA 95131 USA



Please scan the QR code to access additional product information:
GTDC1 Rabbit pAb