

## GLYM Rabbit pAb

CatalogNo: YT7523

### | Key Features

#### Host Species

- Rabbit

#### Reactivity

- Human, Mouse

#### Applications

- WB

#### MW

- 55kD (Calculated)

#### Isotype

- IgG

### | Recommended Dilution Ratios

WB 1:500-2000

### | Storage

#### Storage\*

-15°C to -25°C/1 year (Do not lower than -25°C)

#### Formulation

Liquid in PBS containing 50% glycerol, 0.5% BSA and 0.02% sodium azide.

### | Basic Information

#### Clonality

Polyclonal

### | Immunogen Information

#### Immunogen

Synthesized peptide derived from human GLYM AA range: 122-172

#### Specificity

This antibody detects endogenous levels of GLYM at Human

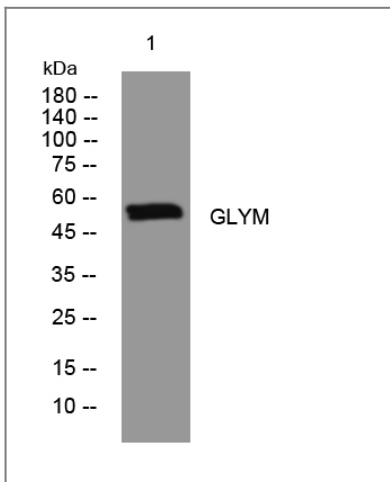
### | Target Information

#### Gene name

SHMT2

<b>Protein Name</b>	GLYM		
	<b>Organism</b>	<b>Gene ID</b>	<b>UniProt ID</b>
	Human	<a href="#">6472;</a>	<a href="#">P34897;</a>
<b>Cellular Localization</b>	Mitochondrion . Mitochondrion matrix, mitochondrion nucleoid . Mitochondrion inner membrane . Cytoplasm . Nucleus . Mainly localizes in the mitochondrion. Also found in the cytoplasm and nucleus as part of the BRISC complex (PubMed:24075985). .		
<b>Function</b>	Catalytic activity:5,10-methylenetetrahydrofolate + glycine + H(2)O = tetrahydrofolate + L-serine.,cofactor:Pyridoxal phosphate.,Function:Interconversion of serine and glycine.,miscellaneous:In eukaryotes there are two forms of the enzymes: a cytosolic one and a mitochondrial one.,pathway:One-carbon metabolism; tetrahydrofolate pathway.,similarity:Belongs to the SHMT family.,subunit:Homotetramer.,		

## Validation Data



Western blot analysis of lysates from A549 cells, primary antibody was diluted at 1:1000, 4° over night

## Contact information

Orders: [order@immunoway.com](mailto:order@immunoway.com)  
 Support: [tech@immunoway.com](mailto:tech@immunoway.com)  
 Telephone: 877-594-3616 (Toll Free), 408-747-0185  
 Website: <http://www.immunoway.com>  
 Address: 2200 Ringwood Ave San Jose, CA 95131 USA



Please scan the QR code to access additional product information:  
**GLYM Rabbit pAb**