

SARDH Rabbit pAb

CatalogNo: YT7522

Key Features

Host Species

- Rabbit

Reactivity

- Human, Mouse, Rat

Applications

- WB, ELISA, IHC

MW

- 101kD (Calculated)

Isotype

- IgG

Recommended Dilution Ratios

WB 1:500-2000

IHC 1:50-300

ELISA 1:2000-20000

Storage

Storage*

-15°C to -25°C/1 year (Do not lower than -25°C)

Formulation

Liquid in PBS containing 50% glycerol, 0.5% BSA and 0.02% sodium azide.

Basic Information

Clonality

Polyclonal

Immunogen Information

Immunogen

Synthesized peptide derived from human SARDH AA range: 279-329

Specificity

This antibody detects endogenous levels of SARDH at Human/Mouse/Rat

Target Information

Gene name

SARDH DMGDHL1

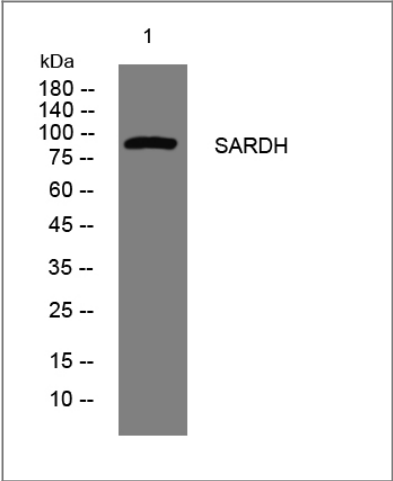
Protein Name	SARDH		
	Organism	Gene ID	UniProt ID
	Human	1757;	Q9UL12;
	Mouse	192166;	Q99LB7;
	Rat	114123;	Q64380;

Cellular Localization Mitochondrion matrix .

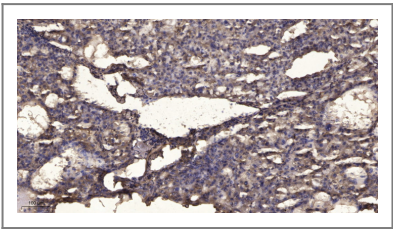
Tissue specificity Expressed in pancreas, liver and kidney.

Function Catalytic activity:Sarcosine + acceptor + H(2)O = glycine + formaldehyde + reduced acceptor.,cofactor:Binds 1 FAD covalently per monomer.,Disease:Defects in SARDH are a ause of sarcosinemia [MIM:268900]. Sarcosinemia is a metabolic disorder characterized by an increased concentration of sarcosine in plasma and urine due to sarcosine dehydrogenase deficiency. Prevalence has been estimated at 1:28'000 to 1:350'000 in newborn screening programs. Sarcosinemia is most probably a benign condition without significant clinical problems. It is transmitted in an autosomal recessive manner.,pathway:Amine and polyamine degradation; sarcosine degradation; formaldehyde and glycine from sarcosine: step 1/1.,similarity:Belongs to the gcvT family.,

Validation Data



Western blot analysis of lysates from 3T3 cells, primary antibody was diluted at 1:1000, 4° over night



Immunohistochemical analysis of paraffin-embedded human liver cancer. 1, Antibody was diluted at 1:200(4° overnight). 2, Tris-EDTA,pH9.0 was used for antigen retrieval. 3,Secondary antibody was diluted at 1:200(room temperature, 45min).

Contact information

Orders: order@immunoway.com
Support: tech@immunoway.com
Telephone: 877-594-3616 (Toll Free), 408-747-0185
Website: http://www.immunoway.com
Address: 2200 Ringwood Ave San Jose, CA 95131 USA



Please scan the QR code
to access additional
product information:
SARDH Rabbit pAb

For Research Use Only. Not for Use in Diagnostic Procedures.

[Antibody](#) | [ELISA Kits](#) | [Protein](#) | [Reagents](#)