

GGNB2 Rabbit pAb

CatalogNo: YT7517

| Key Features

Host Species

- Rabbit

Reactivity

- Human, Mouse, Rat

Applications

- WB

MW

- 77kD (Calculated)

Isotype

- IgG

| Recommended Dilution Ratios

WB 1:500-2000

| Storage

Storage* -15°C to -25°C/1 year (Do not lower than -25°C)

Formulation Liquid in PBS containing 50% glycerol, 0.5% BSA and 0.02% sodium azide.

| Basic Information

Clonality Polyclonal

| Immunogen Information

Immunogen Synthesized peptide derived from human GGNB2 AA range: 225-275

Specificity This antibody detects endogenous levels of GGNB2 at Human/Mouse/Rat

| Target Information

Gene name GGNBP2 LCRG1 LZK1 ZNF403

Protein Name GGNB2

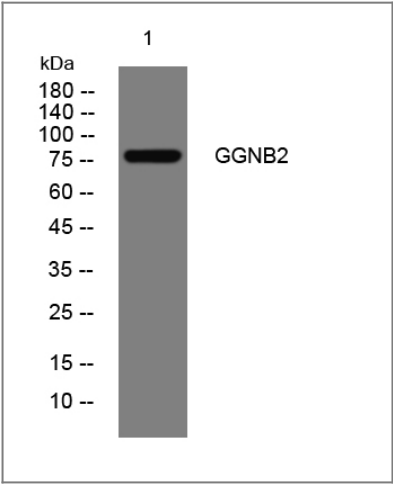
Organism	Gene ID	UniProt ID
Human	79893;	Q9H3C7;
Mouse	217039;	Q5SV77;
Rat	360584;	Q6GVH5;

Cellular Localization Cytoplasmic vesicle . Associated with vesicular structures. .

Tissue specificity Expressed in heart, brain, placenta, lung, liver, skeletal muscle, kidney and pancreas. Expressed more abundantly in heart, pancreas and skeletal muscle.

Function Function:May be involved in spermatogenesis.,miscellaneous:Strongly down-regulated in 40% of primary laryngeal carcinoma and in 6 of 10 various cancer cell lines.,subcellular location:Associated with vesicular structures.,subunit:Interacts with GGN.,tissue specificity:Expressed in heart, brain, placenta, lung, liver, skeletal muscle, kidney and pancreas. Expressed more abundantly in heart, pancreas and skeletal muscle.,

| Validation Data



Western blot analysis of lysates from HpeG2 cells, primary antibody was diluted at 1:1000, 4°over night

| Contact information

Orders: order@immunoway.com
Support: tech@immunoway.com
Telephone: 877-594-3616 (Toll Free), 408-747-0185
Website: <http://www.immunoway.com>
Address: 2200 Ringwood Ave San Jose, CA 95131 USA



Please scan the QR code to access additional product information:
GGNB2 Rabbit pAb

