

## CPPED Rabbit pAb

CatalogNo: YT7510

### | Key Features

#### Host Species

- Rabbit

#### Reactivity

- Human, Mouse, Rat

#### Applications

- WB

#### MW

- 35kD (Calculated)

#### Isotype

- IgG

### | Recommended Dilution Ratios

WB 1:500-2000

### | Storage

**Storage\*** -15°C to -25°C/1 year (Do not lower than -25°C)

**Formulation** Liquid in PBS containing 50% glycerol, 0.5% BSA and 0.02% sodium azide.

### | Basic Information

**Clonality** Polyclonal

### | Immunogen Information

**Immunogen** Synthesized peptide derived from human CPPED AA range: 68-118

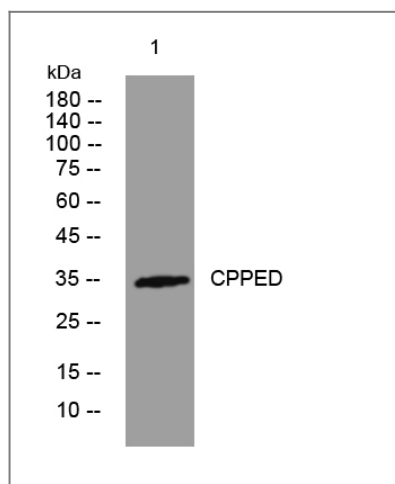
**Specificity** This antibody detects endogenous levels of CPPED at Human/Mouse/Rat

### | Target Information

**Gene name** CPPED1 CSTP1

<b>Protein Name</b>	CPPED		
	<b>Organism</b>	<b>Gene ID</b>	<b>UniProt ID</b>
	Human	<a href="#">55313</a> ;	<a href="#">Q9BRF8</a> ;
	Mouse	<a href="#">223978</a> ;	<a href="#">Q8BFS6</a> ;
	Rat	<a href="#">302890</a> ;	<a href="#">Q66H71</a> ;
<b>Cellular Localization</b>	Cytoplasm .		
<b>Tissue specificity</b>	Expressed in subcutaneous adipose tissue.		
<b>Function</b>	cofactor: Binds 2 divalent metal cations., induction: Transactivated by the large envelope protein of the hepatitis B virus (HBV)., similarity: Belongs to the metallophosphoesterase superfamily. CPPED1 family.,		

## Validation Data



Western blot analysis of lysates from SW480 cells, primary antibody was diluted at 1:1000, 4° over night

## Contact information

Orders: [order@immunoway.com](mailto:order@immunoway.com)  
 Support: [tech@immunoway.com](mailto:tech@immunoway.com)  
 Telephone: 877-594-3616 (Toll Free), 408-747-0185  
 Website: <http://www.immunoway.com>  
 Address: 2200 Ringwood Ave San Jose, CA 95131 USA



Please scan the QR code to access additional product information:  
**CPPED Rabbit pAb**