

ACTY Rabbit pAb

CatalogNo: YT7504

Key Features

Host Species

- Rabbit

Reactivity

- Human, Mouse

Applications

- WB

MW

- 41kD (Calculated)

Isotype

- IgG

Recommended Dilution Ratios

WB 1:500-2000

Storage

Storage* -15°C to -25°C/1 year (Do not lower than -25°C)

Formulation Liquid in PBS containing 50% glycerol, 0.5% BSA and 0.02% sodium azide.

Basic Information

Clonality Polyclonal

Immunogen Information

Immunogen Synthesized peptide derived from human ACTY AA range: 29-79

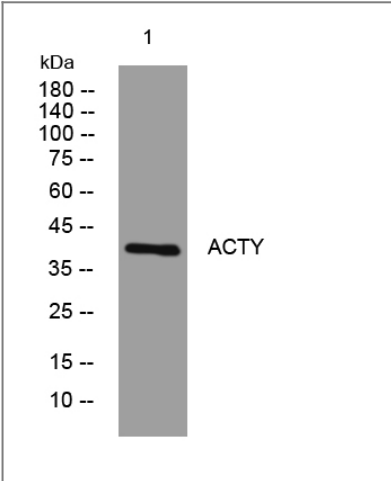
Specificity This antibody detects endogenous levels of ACTY at Human/Mouse

Target Information

Gene name ACTR1B CTRN2

Protein Name	ACTY		
	Organism	Gene ID	UniProt ID
	Human	10120;	P42025;
	Mouse	226977;	Q8R5C5;
Cellular Localization	Cytoplasm, cytoskeleton. Cytoplasm, cytoskeleton, microtubule organizing center, centrosome.		
Function	Function:Component of a multi-subunit complex involved in microtubule based vesicle motility. It is associated with the centrosome.,similarity:Belongs to the actin family.,similarity:Belongs to the actin family. ARP1 subfamily.,		

| Validation Data



Western blot analysis of lysates from AD293 cells, primary antibody was diluted at 1:1000, 4°over night

| Contact information

Orders: order@immunoway.com
Support: tech@immunoway.com
Telephone: 877-594-3616 (Toll Free), 408-747-0185
Website: http://www.immunoway.com
Address: 2200 Ringwood Ave San Jose, CA 95131 USA



Please scan the QR code to access additional product information:
ACTY Rabbit pAb