

PPR32 Rabbit pAb

CatalogNo: YT7498

Key Features

Host Species

- Rabbit

Reactivity

- Human, Mouse, Rat

Applications

- WB, IHC

MW

- 47kD (Calculated)

Isotype

- IgG

Recommended Dilution Ratios

WB 1:500-2000

IHC 1:50-300

Storage

Storage* -15°C to -25°C/1 year (Do not lower than -25°C)

Formulation Liquid in PBS containing 50% glycerol, 0.5% BSA and 0.02% sodium azide.

Basic Information

Clonality Polyclonal

Immunogen Information

Immunogen Synthesized peptide derived from human PPR32 AA range: 72-122

Specificity This antibody detects endogenous levels of PPR32 at Human/Mouse/Rat

Target Information

Gene name PPP1R32 C11orf66

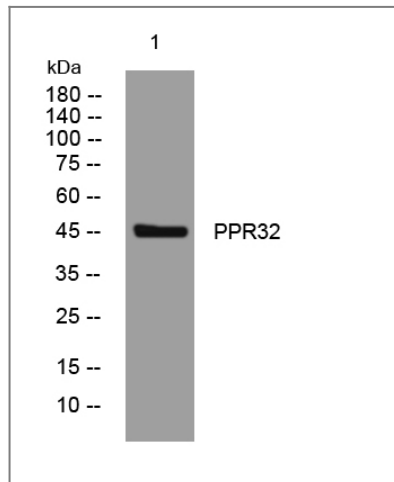
Protein Name PPR32

Organism	Gene ID	UniProt ID
Human	220004 ;	Q7Z5V6 ;
Mouse	67752 ;	Q148A4 ;
Rat	252958 ;	Q66HR9 ;

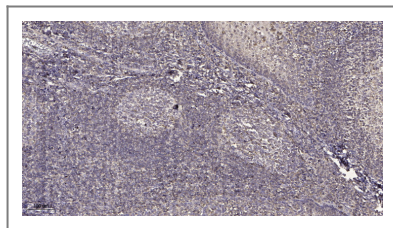
**Cellular
Localization**

Cell projection, cilium . Cytoplasm . Localized to the cilia of polarized ependymal cells during development and at the adult stage. Preferentially locates between the peripheral microtubules of the axoneme and the ciliary membrane. .

Validation Data



Western blot analysis of lysates from MCF-7 cells, primary antibody was diluted at 1:1000, 4° over night



Immunohistochemical analysis of paraffin-embedded human tonsil. 1, Antibody was diluted at 1:200(4° overnight). 2, Tris-EDTA,pH9.0 was used for antigen retrieval. 3,Secondary antibody was diluted at 1:200(room temperature, 45min).

Contact information

Orders: order@immunoway.com
Support: tech@immunoway.com
Telephone: 877-594-3616 (Toll Free), 408-747-0185
Website: <http://www.immunoway.com>
Address: 2200 Ringwood Ave San Jose, CA 95131 USA



Please scan the QR code to access additional product information:
PPR32 Rabbit pAb

