

FBX18 Rabbit pAb

CatalogNo: YT7479

| Key Features

Host Species

- Rabbit

Reactivity

- Human, Mouse

Applications

- WB

MW

- 115kD (Calculated)

Isotype

- IgG

| Recommended Dilution Ratios

WB 1:500-2000

| Storage

Storage*

-15°C to -25°C/1 year (Do not lower than -25°C)

Formulation

Liquid in PBS containing 50% glycerol, 0.5% BSA and 0.02% sodium azide.

| Basic Information

Clonality

Polyclonal

| Immunogen Information

Immunogen

Synthesized peptide derived from human FBX18 AA range: 799-849

Specificity

This antibody detects endogenous levels of FBX18 at Human/Mouse

| Target Information

Gene name

FBXO18 FBH1 FBX18

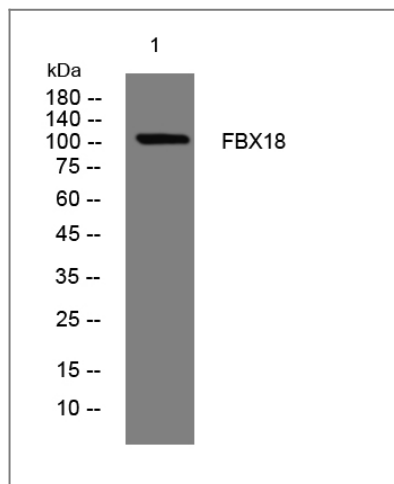
Protein Name FBX18

Organism	Gene ID	UniProt ID
Human	84893;	Q8NFZ0;
Mouse	50755;	Q8K2I9;

Cellular Localization Nucleus . Chromosome . Accumulates at sites of DNA damage or replication stress (PubMed:19736316, PubMed:23677613). PCNA is required for localization to DNA damage sites (PubMed:23677613). Localizes to the nucleoplasm in absence of DNA damage (PubMed:23677613). .

Function Function:DNA-dependent ATPase. Unwinds double-stranded DNA in a 3' to 5' direction.,Function:Probably recognizes and binds to some phosphorylated proteins and promotes their ubiquitination and degradation.,similarity:Belongs to the helicase family. UvrD subfamily.,similarity:Contains 1 F-box domain.,subunit:Part of a SCF E3 ubiquitin ligase complex consisting of SKP1, CUL1, RBX1 and FBXO18. Interacts with SKP1.,

Validation Data



Western blot analysis of lysates from HuvEc cells, primary antibody was diluted at 1:1000, 4° over night

Contact information

Orders: order@immunoway.com
Support: tech@immunoway.com
Telephone: 877-594-3616 (Toll Free), 408-747-0185
Website: <http://www.immunoway.com>
Address: 2200 Ringwood Ave San Jose, CA 95131 USA



Please scan the QR code to access additional product information:
FBX18 Rabbit pAb