

ATAD5 Rabbit pAb

CatalogNo: YT7475

Key Features

Host Species

- Rabbit

Reactivity

- Human, Mouse

Applications

- WB

MW

- 203kD (Calculated)

Isotype

- IgG

Recommended Dilution Ratios

WB 1:500-2000

Storage

Storage*

-15°C to -25°C/1 year (Do not lower than -25°C)

Formulation

Liquid in PBS containing 50% glycerol, 0.5% BSA and 0.02% sodium azide.

Basic Information

Clonality

Polyclonal

Immunogen Information

Immunogen

Synthesized peptide derived from human ATAD5 AA range: 1054-1104

Specificity

This antibody detects endogenous levels of ATAD5 at Human/Mouse

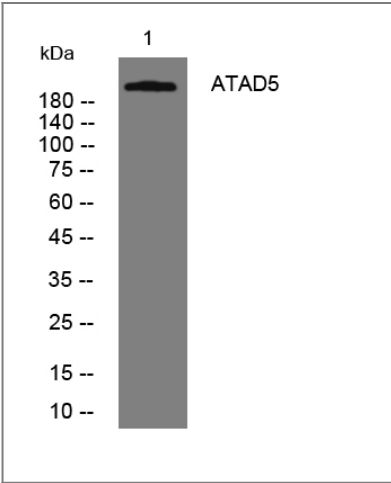
Target Information

Gene name

ATAD5 C17orf41 FRAG1

Protein Name	ATAD5		
	Organism	Gene ID	UniProt ID
	Human	79915;	Q96QE3;
	Mouse	237877;	Q4QY64;
Cellular Localization	Nucleus .		
Function	Function:Involved in DNA damage response. Involved in a RAD9A-related damage checkpoint, a pathway that is important in determining whether DNA damage is compatible with cell survival or whether it requires cell elimination by apoptosis. Modulates the RAD9A interaction with BCL2 and thereby induces DNA damages-induced apoptosis.,PTM:Phosphorylated upon DNA damage, probably by ATM or ATR. ATR may stimulate the RAD9A dissociation.,sequence Caution:Contaminating sequence. Potential poly-A sequence.,similarity:Belongs to the AAA ATPase family.,subunit:Interacts with RB1 predominantly in G1 phase via its LXCXE motif. Interacts with RAD9A in growing cells. The interaction with RAD9A is reduced after exposure to DNA replication-inhibiting agents.,		

| Validation Data



Western blot analysis of lysates from Hela cells, primary antibody was diluted at 1:1000, 4°over night

| Contact information

Orders: order@immunoway.com
Support: tech@immunoway.com
Telephone: 877-594-3616 (Toll Free), 408-747-0185
Website: http://www.immunoway.com
Address: 2200 Ringwood Ave San Jose, CA 95131 USA



Please scan the QR code to access additional product information:
ATAD5 Rabbit pAb

