

ERLN1 Rabbit pAb

CatalogNo: YT7470

Key Features

Host Species

- Rabbit

Reactivity

- Human, Mouse

Applications

- WB

MW

- 38kD (Calculated)

Isotype

- IgG

Recommended Dilution Ratios

WB 1:500-2000

Storage

Storage*

-15°C to -25°C/1 year (Do not lower than -25°C)

Formulation

Liquid in PBS containing 50% glycerol, 0.5% BSA and 0.02% sodium azide.

Basic Information

Clonality

Polyclonal

Immunogen Information

Immunogen

Synthesized peptide derived from human ERLN1 AA range: 185-235

Specificity

This antibody detects endogenous levels of ERLN1 at Human/Mouse

Target Information

Gene name

ERLN1 C10orf69 KE04 KEO4 SPFH1

Protein Name ERLN1

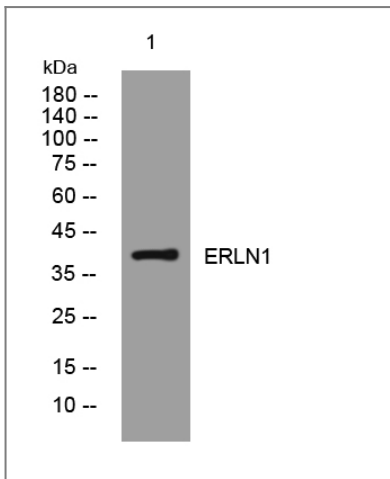
Organism	Gene ID	UniProt ID
Human	10613 ;	O75477 ;
Mouse	226144 ;	Q91X78 ;

Cellular Localization Endoplasmic reticulum membrane ; Single-pass type II membrane protein . Associated with lipid raft-like domains of the endoplasmic reticulum membrane.

Tissue specificity Expressed in heart, placenta, liver, kidney, pancreas, prostate, testis, ovary and small intestine.

Function similarity:Belongs to the band 7/mec-2 family.,subcellular location:Associated with lipid raft-like domains of the endoplasmic reticulum membrane.,tissue specificity:Expressed in heart, placenta, liver, kidney, pancreas, prostate, testis, ovary and small intestine.,

Validation Data



Western blot analysis of lysates from U2OS cells, primary antibody was diluted at 1:1000, 4° over night

Contact information

Orders: order@immunoway.com
Support: tech@immunoway.com
Telephone: 877-594-3616 (Toll Free), 408-747-0185
Website: <http://www.immunoway.com>
Address: 2200 Ringwood Ave San Jose, CA 95131 USA



Please scan the QR code to access additional product information:
ERLN1 Rabbit pAb