

WDR47 Rabbit pAb

CatalogNo: YT7459

Key Features

Host Species

- Rabbit

Reactivity

- Human, Mouse

Applications

- WB

MW

- 101kD (Calculated)

Isotype

- IgG

Recommended Dilution Ratios

WB 1:500-2000

Storage

Storage*

-15°C to -25°C/1 year (Do not lower than -25°C)

Formulation

Liquid in PBS containing 50% glycerol, 0.5% BSA and 0.02% sodium azide.

Basic Information

Clonality

Polyclonal

Immunogen Information

Immunogen

Synthesized peptide derived from human WDR47 AA range: 474-524

Specificity

This antibody detects endogenous levels of WDR47 at Human/Mouse

Target Information

Gene name

WDR47 KIAA0893

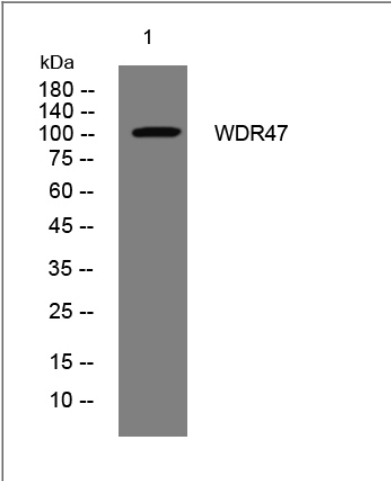
Protein Name WDR47

Organism	Gene ID	UniProt ID
Human	22911 ;	O94967 ;
Mouse	99512 ;	Q8CGF6 ;

Cellular Localization Cytoplasm, cytoskeleton . Localization along microtubules is mediated by MAP1S. .

Function Caution:The sequence shown here is derived from an Ensembl automatic analysis pipeline and should be considered as preliminary data.,similarity:Contains 1 CTLH domain.,similarity:Contains 1 LisH domain.,similarity:Contains 7 WD repeats.,

Validation Data



Western blot analysis of lysates from MCF-7 cells, primary antibody was diluted at 1:1000, 4°over night

Contact information

Orders: order@immunoway.com
Support: tech@immunoway.com
Telephone: 877-594-3616 (Toll Free), 408-747-0185
Website: http://www.immunoway.com
Address: 2200 Ringwood Ave San Jose, CA 95131 USA



Please scan the QR code to access additional product information:
WDR47 Rabbit pAb