

S2541 Rabbit pAb

CatalogNo: YT7446

| Key Features

Host Species

- Rabbit

Reactivity

- Human, Mouse

Applications

- WB

MW

- 41kD (Calculated)

Isotype

- IgG

| Recommended Dilution Ratios

WB 1:500-2000

| Storage

Storage*

-15°C to -25°C/1 year (Do not lower than -25°C)

Formulation

Liquid in PBS containing 50% glycerol, 0.5% BSA and 0.02% sodium azide.

| Basic Information

Clonality

Polyclonal

| Immunogen Information

Immunogen

Synthesized peptide derived from human S2541 AA range: 301-351

Specificity

This antibody detects endogenous levels of S2541 at Human/Mouse

| Target Information

Gene name

SLC25A41

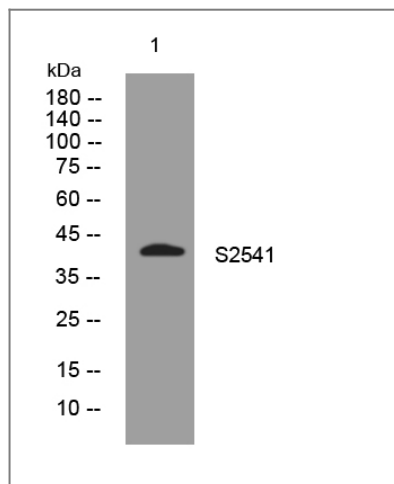
Protein Name S2541

Organism	Gene ID	UniProt ID
Human	284427 ;	Q8N5S1 ;
Mouse	103775 ;	Q8BVN7 ;

Cellular Localization Mitochondrion inner membrane ; Multi-pass membrane protein .

Function sequence Caution:Wrong choice of CDS.,similarity:Belongs to the mitochondrial carrier family.,similarity:Contains 3 Solcar repeats.,

Validation Data



Western blot analysis of lysates from HeLa cells, primary antibody was diluted at 1:1000, 4°over night

Contact information

Orders: order@immunoway.com
Support: tech@immunoway.com
Telephone: 877-594-3616 (Toll Free), 408-747-0185
Website: <http://www.immunoway.com>
Address: 2200 Ringwood Ave San Jose, CA 95131 USA



Please scan the QR code to access additional product information:
S2541 Rabbit pAb

For Research Use Only. Not for Use in Diagnostic Procedures.

[Antibody](#) | [ELISA Kits](#) | [Protein](#) | [Reagents](#)