

PCD19 Rabbit pAb

CatalogNo: YT7422

Key Features

Host Species

- Rabbit

Reactivity

- Human, Mouse

Applications

- WB, IHC

MW

- 126kD (Calculated)

Isotype

- IgG

Recommended Dilution Ratios

WB 1:500-2000

IHC 1:50-300

Storage

Storage* -15°C to -25°C/1 year (Do not lower than -25°C)

Formulation Liquid in PBS containing 50% glycerol, 0.5% BSA and 0.02% sodium azide.

Basic Information

Clonality Polyclonal

Immunogen Information

Immunogen Synthesized peptide derived from human PCD19 AA range: 841-891

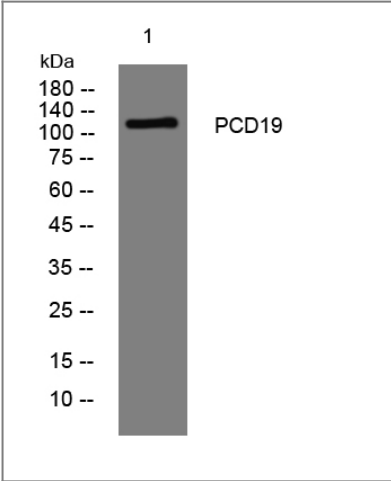
Specificity This antibody detects endogenous levels of PCD19 at Human/Mouse

Target Information

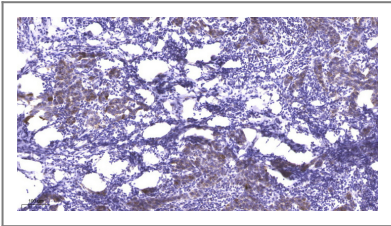
Gene name PCDH19 KIAA1313

Protein Name	PCD19		
	Organism	Gene ID	UniProt ID
	Human	57526;	Q8TAB3;
	Mouse	279653;	Q80TF3;
Cellular Localization	Cell membrane ; Single-pass type I membrane protein .		
Tissue specificity	Moderately expressed in all regions of the brain examined, with lowest levels found in the cerebellum. Moderate expression is also found in ovary, and low expression in all other tissues tested. Also detected in primary skin fibroblast.		
Function	developmental stage:Expressed in developing cortical plate, amygdala and subcortical regions and in the ganglionic eminence.,Disease:Defects in PCDH19 are the cause of epilepsy, female-restricted, with mental retardation (EFMR) [MIM:300088]; also known as convulsive disorder and mental retardation. EFMR is a condition characterized by seizure onset in infancy or early childhood and cognitive impairment. The disorder is sex-limited, with the phenotype being restricted to females. Males are apparently spared.,Function:Potential calcium-dependent cell-adhesion protein.,similarity:Contains 6 cadherin domains.,tissue specificity:Moderately expressed in all regions of the brain examined, with lowest levels found in the cerebellum. Moderate expression is also found in ovary, and low expression in all other tissues tested. Also detected in primary skin fibroblast.,		

Validation Data



Western blot analysis of lysates from HuvEc cells, primary antibody was diluted at 1:1000, 4°over night



Immunohistochemical analysis of paraffin-embedded human Breast cancer. 1, Antibody was diluted at 1:200(4° overnight). 2, Tris-EDTA,pH9.0 was used for antigen retrieval. 3,Secondary antibody was diluted at 1:200(room temperature, 45min).

| Contact information

Orders: order@immunoway.com
Support: tech@immunoway.com
Telephone: 877-594-3616 (Toll Free), 408-747-0185
Website: <http://www.immunoway.com>
Address: 2200 Ringwood Ave San Jose, CA 95131 USA



Please scan the QR code
to access additional
product information:
PCD19 Rabbit pAb

For Research Use Only. Not for Use in Diagnostic Procedures.

[Antibody](#) | [ELISA Kits](#) | [Protein](#) | [Reagents](#)