

## POTEC Rabbit pAb

CatalogNo: YT7417

### Key Features

#### Host Species

- Rabbit

#### Reactivity

- Human

#### Applications

- WB

#### MW

- 60kD (Calculated)

#### Isotype

- IgG

### Recommended Dilution Ratios

WB 1:500-2000

### Storage

#### Storage\*

-15°C to -25°C/1 year(Do not lower than -25°C)

#### Formulation

Liquid in PBS containing 50% glycerol, 0.5% BSA and 0.02% sodium azide.

### Basic Information

#### Clonality

Polyclonal

### Immunogen Information

#### Immunogen

Synthesized peptide derived from human POTEC AA range: 265-315

#### Specificity

This antibody detects endogenous levels of POTEC at Human

### Target Information

#### Gene name

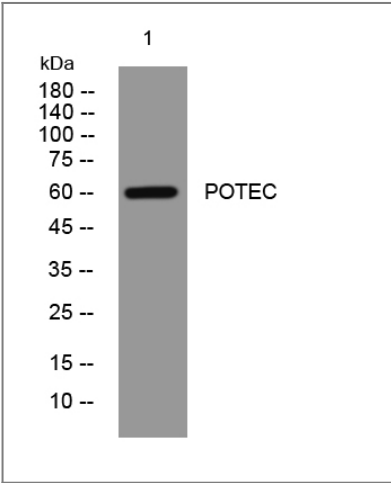
POTEC A26B2 POTE18

Protein Name	POTEC		
	Organism	Gene ID	UniProt ID
	Human	<a href="#">388468</a> ;	<a href="#">B2RU33</a> ;

**Tissue specificity** Expressed in prostate and testis.

**Function** similarity:Belongs to the POTE family.,similarity:Contains 6 ANK repeats.,similarity:Contains 7 ANK repeats.,tissue specificity:Expressed in prostate and testis.,tissue specificity:Expressed in prostate, ovary, testis, placenta and prostate cancer cell lines. Localizes to basal and terminal prostate epithelial cells.,

## Validation Data



Western blot analysis of lysates from Hela cells, primary antibody was diluted at 1:1000, 4°over night

## Contact information

Orders:           order@immunoway.com  
 Support:         tech@immunoway.com  
 Telephone:      877-594-3616 (Toll Free), 408-747-0185  
 Website:        http://www.immunoway.com  
 Address:         2200 Ringwood Ave San Jose, CA 95131 USA



Please scan the QR code to access additional product information:  
**POTEC Rabbit pAb**

For Research Use Only. Not for Use in Diagnostic Procedures.

[Antibody](#) | [ELISA Kits](#) | [Protein](#) | [Reagents](#)