

## KRBA1 Rabbit pAb

CatalogNo: YT7393

### Key Features

#### Host Species

- Rabbit

#### Reactivity

- Human, Mouse

#### Applications

- WB, ELISA, IHC

#### MW

- 113kD (Calculated)

#### Isotype

- IgG

### Recommended Dilution Ratios

WB 1:500-2000

IHC 1:50-300

ELISA 1:2000-20000

### Storage

#### Storage\*

-15°C to -25°C/1 year (Do not lower than -25°C)

#### Formulation

Liquid in PBS containing 50% glycerol, 0.5% BSA and 0.02% sodium azide.

### Basic Information

#### Clonality

Polyclonal

### Immunogen Information

#### Immunogen

Synthesized peptide derived from human KRBA1 AA range: 738-788

#### Specificity

This antibody detects endogenous levels of KRBA1 at Human/Mouse

### Target Information

#### Gene name

KRBA1 KIAA1862

**Protein Name** KRBA1

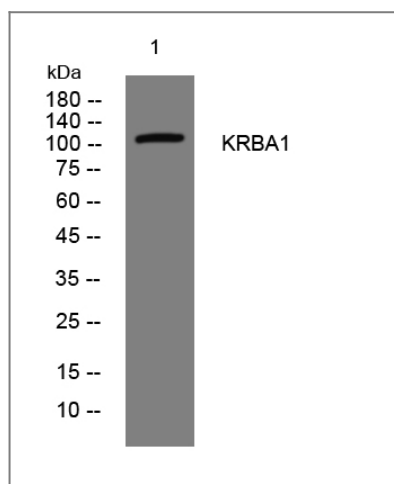
Organism	Gene ID	UniProt ID
Human	<a href="#">84626;</a>	<a href="#">A5PL33;</a>
Mouse	<a href="#">77827;</a>	<a href="#">Q6NXZ1;</a>

**Cellular Localization** intracellular,

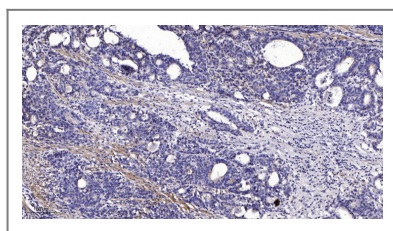
**Tissue specificity** Expressed in brain (cerebellum).

**Function** tissue specificity:Expressed in brain (cerebellum).,

## Validation Data



Western blot analysis of lysates from HEK293 cells, primary antibody was diluted at 1:1000, 4° over night



Immunohistochemical analysis of paraffin-embedded human Gastric adenocarcinoma. 1, Antibody was diluted at 1:200(4° overnight). 2, Tris-EDTA,pH9.0 was used for antigen retrieval. 3,Secondary antibody was diluted at 1:200(room temperature, 45min).

## Contact information

Orders: [order@immunoway.com](mailto:order@immunoway.com)  
Support: [tech@immunoway.com](mailto:tech@immunoway.com)  
Telephone: 877-594-3616 (Toll Free), 408-747-0185  
Website: <http://www.immunoway.com>  
Address: 2200 Ringwood Ave San Jose, CA 95131 USA



Please scan the QR code to access additional product information:  
**KRBA1 Rabbit pAb**

