

## FKB15 Rabbit pAb

CatalogNo: YT7390

### Key Features

#### Host Species

- Rabbit

#### Reactivity

- Human, Mouse

#### Applications

- WB

#### MW

- 134kD (Calculated)

#### Isotype

- IgG

### Recommended Dilution Ratios

WB 1:500-2000

### Storage

**Storage\*** -15°C to -25°C/1 year (Do not lower than -25°C)

**Formulation** Liquid in PBS containing 50% glycerol, 0.5% BSA and 0.02% sodium azide.

### Basic Information

**Clonality** Polyclonal

### Immunogen Information

**Immunogen** Synthesized peptide derived from human FKB15 AA range: 847-897

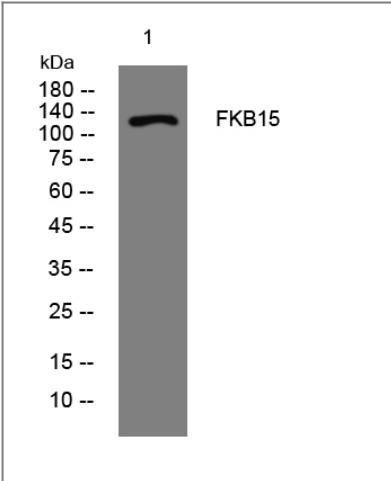
**Specificity** This antibody detects endogenous levels of FKB15 at Human/Mouse

### Target Information

**Gene name** FKBP15 KIAA0674

Protein Name	FKB15		
	Organism	Gene ID	UniProt ID
	Human	<a href="#">23307;</a>	<a href="#">Q5T1M5;</a>
	Mouse	<a href="#">338355;</a>	<a href="#">Q6P9Q6;</a>
Cellular Localization	Cytoplasm . Cell projection, axon . Early endosome . Present in axons and neuronal growth cones. .		
Function	Domain:The PPlase FKBP-type domain seems to be inactive both for FK506-binding and enzymatic activity.,Function:May be involved in the cytoskeletal organization of neuronal growth cones. Seems to be inactive as a PPlase.,similarity:Belongs to the FKBP-type PPlase family.,similarity:Contains 1 PPlase FKBP-type domain.,subcellular location:Present in axons and neuronal growth cones.,		

## Validation Data



Western blot analysis of lysates from K562 cells, primary antibody was diluted at 1:1000, 4°over night

## Contact information

Orders: [order@immunoway.com](mailto:order@immunoway.com)  
 Support: [tech@immunoway.com](mailto:tech@immunoway.com)  
 Telephone: 877-594-3616 (Toll Free), 408-747-0185  
 Website: <http://www.immunoway.com>  
 Address: 2200 Ringwood Ave San Jose, CA 95131 USA



Please scan the QR code  
 to access additional  
 product information:  
**FKB15 Rabbit pAb**