

## TRI47 Rabbit pAb

CatalogNo: YT7382

### Key Features

#### Host Species

- Rabbit

#### Reactivity

- Human, Mouse

#### Applications

- WB

#### MW

- 70kD (Calculated)

#### Isotype

- IgG

### Recommended Dilution Ratios

WB 1:500-2000

### Storage

#### Storage\*

-15°C to -25°C/1 year (Do not lower than -25°C)

#### Formulation

Liquid in PBS containing 50% glycerol, 0.5% BSA and 0.02% sodium azide.

### Basic Information

#### Clonality

Polyclonal

### Immunogen Information

#### Immunogen

Synthesized peptide derived from human TRI47 AA range: 199-249

#### Specificity

This antibody detects endogenous levels of TRI47 at Human/Mouse

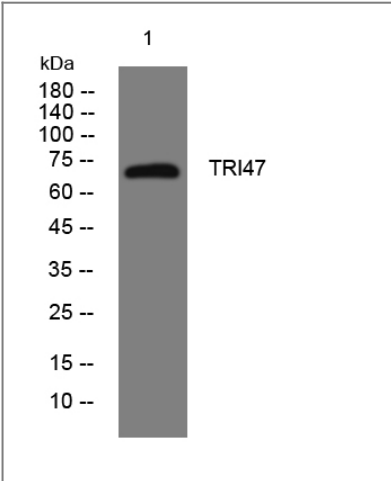
### Target Information

#### Gene name

TRIM47 GOA RNF100

<b>Protein Name</b>	TRI47		
	<b>Organism</b>	<b>Gene ID</b>	<b>UniProt ID</b>
	Human	<a href="#">91107</a> ;	<a href="#">Q96LD4</a> ;
	Mouse	<a href="#">217333</a> ;	<a href="#">Q8C0E3</a> ;
<b>Cellular Localization</b>	Cytoplasm . Nucleus .		
<b>Tissue specificity</b>	Low expression in most tissues. Higher expression in kidney tubular cells. Overexpressed in astrocytoma tumor cells.		
<b>Function</b>	similarity:Belongs to the TRIM/RBCC family.,similarity:Contains 1 B box-type zinc finger.,similarity:Contains 1 B30.2/SPRY domain.,similarity:Contains 1 RING-type zinc finger.,tissue specificity:Low expression in most tissues. Higher expression in kidney tubular cells. Overexpressed in astrocytoma tumor cells.,		

| Validation Data



Western blot analysis of lysates from AD293 cells, primary antibody was diluted at 1:1000, 4°over night

| Contact information

Orders: [order@immunoway.com](mailto:order@immunoway.com)  
 Support: [tech@immunoway.com](mailto:tech@immunoway.com)  
 Telephone: 877-594-3616 (Toll Free), 408-747-0185  
 Website: <http://www.immunoway.com>  
 Address: 2200 Ringwood Ave San Jose, CA 95131 USA



Please scan the QR code  
 to access additional  
 product information:  
**TRI47 Rabbit pAb**