

MAN1 Rabbit pAb

CatalogNo: YT7363

Key Features

Host Species

- Rabbit

Reactivity

- Human, Mouse

Applications

- WB

MW

- 100kD (Calculated)

Isotype

- IgG

Storage

Storage* -15°C to -25°C/1 year (Do not lower than -25°C)

Formulation Liquid in PBS containing 50% glycerol, 0.5% BSA and 0.02% sodium azide.

Recommended Dilution Ratios

WB 1:500-2000

Basic Information

Clonality Polyclonal

Immunogen Information

Immunogen Synthesized peptide derived from human MAN1 AA range: 61-111

Specificity This antibody detects endogenous levels of MAN1 at Human/Mouse

Target Information

Gene name LEMD3 MAN1

Protein Name MAN1

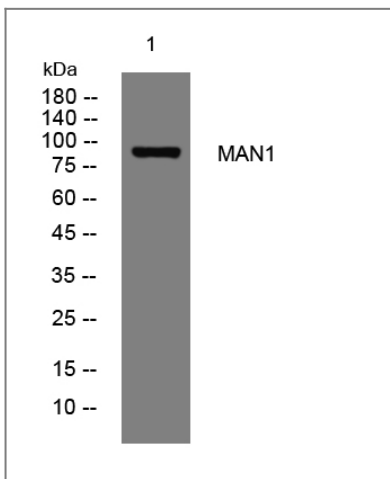
Organism	Gene ID	UniProt ID
Human	23592 ;	Q9Y2U8 ;
Mouse	380664 ;	Q9WU40 ;

Cellular Localization Nucleus inner membrane ; Multi-pass membrane protein .

Tissue specificity Heart, brain, placenta, lung, liver and skeletal muscle.

Function Disease:Defects in LEMD3 are a cause of melorheostosis [MIM:155950]. Melorheostosis is a rare mesenchymal dysplasia and one of the sclerosing bone disorders. It is caused by a developmental error, with a sclerotomal distribution, frequently involving one limb. It may be asymptomatic, but pain, stiffness with limitation of motion, leg-length discrepancy and limb deformity may occur.,Disease:Defects in LEMD3 are the cause of Buschke-Ollendorff syndrome (BOS) [MIM:166700]; also known as dermatoosteopoikilosis or disseminated dermatofibrosis with osteopoikilosis or dermatofibrosis lenticularis disseminata with osteopoikilosis or osteopathia condensans disseminata. BOS refers to the association of osteopoikilosis with disseminated connective-tissue nevi. Osteopoikilosis is a skeletal dysplasia characterized by a symmetric but unequal distribution of multiple hyperostotic areas in different parts of the skeleton. Both elastic-type nevi (juvenile elastoma) and collagen-type nevi (dermatofibrosis lenticularis disseminata) have been described in BOS. Skin or bony lesions can be absent in some family members, whereas other relatives may have both.,similarity:Contains 1 LEM domain.,tissue specificity:Heart, brain, placenta, lung, liver and skeletal muscle.,

Validation Data



Western blot analysis of lysates from MCF-7 cells, primary antibody was diluted at 1:1000, 4° over night

Contact information

Orders: order@immunoway.com
Support: tech@immunoway.com
Telephone: 877-594-3616 (Toll Free), 408-747-0185
Website: http://www.immunoway.com
Address: 2200 Ringwood Ave San Jose, CA 95131 USA



Please scan the QR code
to access additional
product information:
MAN1 Rabbit pAb

For Research Use Only. Not for Use in Diagnostic Procedures.

[Antibody](#) | [ELISA Kits](#) | [Protein](#) | [Reagents](#)