

KDEL2 Rabbit pAb

CatalogNo: YT7337

Key Features

Host Species

- Rabbit

Reactivity

- Human,Rat

Applications

- WB,ELISA,IHC

MW

- 56kD (Calculated)

Isotype

- IgG

Recommended Dilution Ratios

WB 1:500-2000

IHC 1:50-300

ELISA 1:2000-20000

Storage

Storage*

-15°C to -25°C/1 year(Do not lower than -25°C)

Formulation

Liquid in PBS containing 50% glycerol, 0.5% BSA and 0.02% sodium azide.

Basic Information

Clonality

Polyclonal

Immunogen Information

Immunogen

Synthesized peptide derived from human KDEL2 AA range: 414-464

Specificity

This antibody detects endogenous levels of KDEL2 at Human/Rat

Target Information

Gene name

KDELC2 UNQ1904/PRO4350

Protein Name KDEL2

Organism

Gene ID

UniProt ID

Human

[143888](#);

[Q7Z4H8](#);

Rat

[315664](#);

[Q566E5](#);

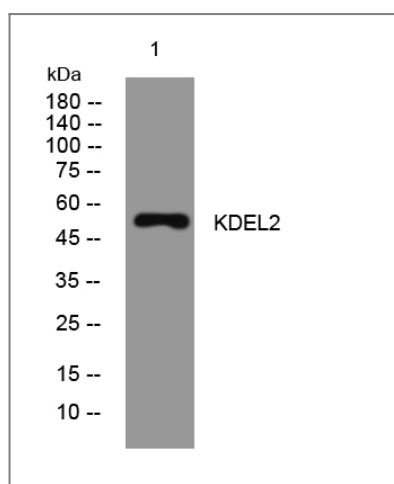
**Cellular
Localization**

Endoplasmic reticulum lumen .

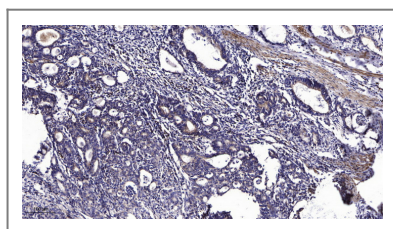
Function

similarity:Belongs to the KDELC family.,similarity:Contains 1 filamin repeat.,

Validation Data



Western blot analysis of lysates from U2OS cells, primary antibody was diluted at 1:1000, 4° over night



Immunohistochemical analysis of paraffin-embedded human Gastric adenocarcinoma. 1, Antibody was diluted at 1:200(4° overnight). 2, Tris-EDTA,pH9.0 was used for antigen retrieval. 3,Secondary antibody was diluted at 1:200(room temperature, 45min).

Contact information

Orders: order@immunoway.com
Support: tech@immunoway.com
Telephone: 877-594-3616 (Toll Free), 408-747-0185
Website: <http://www.immunoway.com>
Address: 2200 Ringwood Ave San Jose, CA 95131 USA



Please scan the QR code to access additional product information:
KDEL2 Rabbit pAb

