

TYW2 Rabbit pAb

CatalogNo: YT7332

| Key Features

Host Species

- Rabbit

Reactivity

- Human, Mouse, Rat

Applications

- WB

MW

- 49kD (Calculated)

Isotype

- IgG

| Recommended Dilution Ratios

WB 1:500-2000

| Storage

Storage*

-15°C to -25°C/1 year (Do not lower than -25°C)

Formulation

Liquid in PBS containing 50% glycerol, 0.5% BSA and 0.02% sodium azide.

| Basic Information

Clonality

Polyclonal

| Immunogen Information

Immunogen

Synthesized peptide derived from human TYW2 AA range: 11-61

Specificity

This antibody detects endogenous levels of TYW2 at Human/Mouse/Rat

| Target Information

Gene name

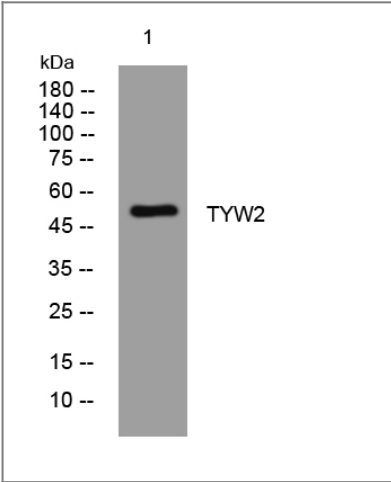
TRMT12 TRM12 TYW2

Protein Name TYW2

Organism	Gene ID	UniProt ID
Human	55039 ;	Q53H54 ;
Mouse	68260 ;	Q8BG71 ;
Rat	314999 ;	Q4V8B8 ;

Function Function:Probable S-adenosyl-L-methionine-dependent methyltransferase that acts as a component of the wybutosine biosynthesis pathway. Wybutosine is a hyper modified guanosine with a tricyclic base found at the 3'-position adjacent to the anticodon of eukaryotic phenylalanine tRNA.,pathway:tRNA modification; wybutosine-tRNA(Phe) biosynthesis.,sequence Caution:Contaminating sequence. Potential poly-A sequence starting in position 371.,sequence Caution:Translation N-terminally shortened.,similarity:Belongs to the RNA methyltransferase trmD family. TYW2 subfamily.,

Validation Data



Western blot analysis of lysates from HeLa cells, primary antibody was diluted at 1:1000, 4°over night

Contact information

Orders: order@immunoway.com
Support: tech@immunoway.com
Telephone: 877-594-3616 (Toll Free), 408-747-0185
Website: http://www.immunoway.com
Address: 2200 Ringwood Ave San Jose, CA 95131 USA



Please scan the QR code to access additional product information:
TYW2 Rabbit pAb