

## PAP1L Rabbit pAb

CatalogNo: YT7327

### Key Features

#### Host Species

- Rabbit

#### Reactivity

- Human

#### Applications

- WB

#### MW

- 68kD (Calculated)

#### Isotype

- IgG

### Storage

**Storage\*** -15°C to -25°C/1 year(Do not lower than -25°C)

**Formulation** Liquid in PBS containing 50% glycerol, 0.5% BSA and 0.02% sodium azide.

### Recommended Dilution Ratios

**WB 1:500-2000**

### Basic Information

**Clonality** Polyclonal

### Immunogen Information

**Immunogen** Synthesized peptide derived from human PAP1L AA range: 251-301

**Specificity** This antibody detects endogenous levels of PAP1L at Human

### Target Information

**Gene name** PABPC1L C20orf119

**Protein Name** PAP1L

**Organism**

Human

**Gene ID**

[80336](#);

**UniProt ID**

[Q4VXU2](#);

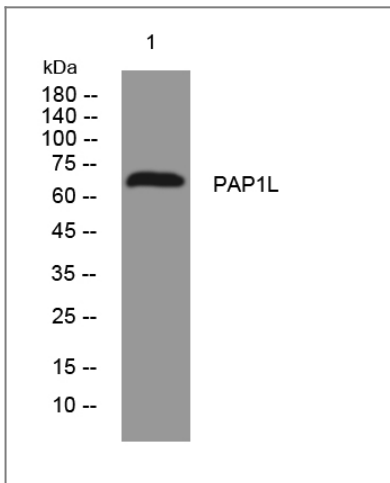
**Cellular Localization**

extracellular exosome,

**Function**

similarity:Belongs to the polyadenylate-binding protein type-1 family.,similarity:Contains 1 PABC domain.,similarity:Contains 4 RRM (RNA recognition motif) domains.,

## Validation Data



Western blot analysis of lysates from SW480 cells, primary antibody was diluted at 1:1000, 4° over night

## Contact information

Orders: [order@immunoway.com](mailto:order@immunoway.com)  
Support: [tech@immunoway.com](mailto:tech@immunoway.com)  
Telephone: 877-594-3616 (Toll Free), 408-747-0185  
Website: <http://www.immunoway.com>  
Address: 2200 Ringwood Ave San Jose, CA 95131 USA



Please scan the QR code to access additional product information:  
**PAP1L Rabbit pAb**

For Research Use Only. Not for Use in Diagnostic Procedures.

[Antibody](#) | [ELISA Kits](#) | [Protein](#) | [Reagents](#)