

## WDR78 Rabbit pAb

CatalogNo: YT7326

### Key Features

#### Host Species

- Rabbit

#### Reactivity

- Human, Mouse, Rat

#### Applications

- WB

#### MW

- 93kD (Calculated)

#### Isotype

- IgG

### Storage

**Storage\*** -15°C to -25°C/1 year (Do not lower than -25°C)

**Formulation** Liquid in PBS containing 50% glycerol, 0.5% BSA and 0.02% sodium azide.

### Recommended Dilution Ratios

**WB 1:500-2000**

### Basic Information

**Clonality** Polyclonal

### Immunogen Information

**Immunogen** Synthesized peptide derived from human WDR78 AA range: 281-331

**Specificity** This antibody detects endogenous levels of WDR78 at Human/Mouse/Rat

### Target Information

**Gene name** WDR78

**Protein Name** WDR78

Organism	Gene ID	UniProt ID
Human	<a href="#">79819</a> ;	<a href="#">Q5VTH9</a> ;
Mouse	<a href="#">242584</a> ;	<a href="#">E9PYY5</a> ;
Rat	<a href="#">313417</a> ;	<a href="#">Q4V8G4</a> ;

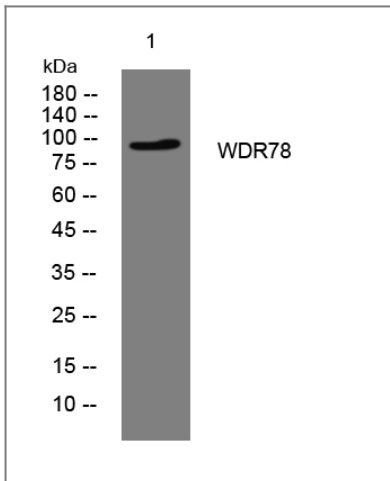
**Cellular Localization**

Cytoplasm, cytoskeleton, flagellum axoneme . Cytoplasm, cytoskeleton, cilium axoneme . Dynein axonemal particle .

**Function**

similarity:Contains 6 WD repeats.,

## Validation Data



Western blot analysis of lysates from SH-SY5Y cells, primary antibody was diluted at 1:1000, 4° over night

## Contact information

Orders: [order@immunoway.com](mailto:order@immunoway.com)  
Support: [tech@immunoway.com](mailto:tech@immunoway.com)  
Telephone: 877-594-3616 (Toll Free), 408-747-0185  
Website: <http://www.immunoway.com>  
Address: 2200 Ringwood Ave San Jose, CA 95131 USA



Please scan the QR code to access additional product information:  
**WDR78 Rabbit pAb**